

# precision liquid handling



**Electronic micropipettes**

**Digital reading micropipettes**

**Digital setting micropipettes**

**Positive displacement pipettes**

**Repeater pipette**

**Microdispenser pipettes**

**Low profile dispensers**

**Bottle-top dispensers**

**Laboratory syringes**

**Pipette controllers**

**Work stations**

**Pipette tips / consumables**

**Service center**

# Welcome to Socorex – a world of expertise in prec

## Dear Partner in science,

Welcome to the new Socorex catalogue edition, opening to a world of precision instruments.

It contains a fair amount of novelties, especially considering the expansion of our state of the art micropipettes. The extra sharp Acura® manual XS, mainly intended to the research laboratories, represents a significant advance in the metrology of liquid micro-measurements. A new generation of microprocessor-controlled Acura® electro pipette - with unsurpassed performances and numerous great assets - is also featured in details.

These pages will guide you through a wide selection of high performance, ergonomic and safe instruments, engineered and designed with excellence in mind.

Well trained, documented and equipped to provide professional advice and technical support, our reliable network of authorized distributors is a key vector of our strategy.

But the millions of famous Socorex instruments in use throughout the world would mean little, be it for the ever growing number of our happy and loyal customers.

Thank you for having made Socorex synonymous with quality and trust. I assure you of our continued commitment to supplying the best metrological technology and services in this industry.



Sylvain Christen, CEO

## Brief history

Socorex Isba SA, often referred to as just Socorex, was first founded in the late 1940s. Two young watchmakers had identified the need for new types of quality syringes for medical applications. The products rapidly met international success.

In search for synergies, the company merged with another firm a few years later.

Renamed Socorex Isba S.A., the new entity moved to Lausanne on Lake Geneva in 1960.

Its growth, particularly in the laboratory field, soon forced the company out of the city to its today's larger, expandable facility in Ecublens, home of the Federal Institute of Technology (EPFL) and University of Lausanne (UNIL).

## Products & services

Today's manufacturing programme includes a wide variety of high precision instruments used for reliably measuring, dosing, transferring, dispensing and injecting liquids in a large number of applications.

Manual and electronic micropipettes, multichannel pipettors, repeater pipettes, dispensers, pipette controllers and re-usable syringes, together with their accessories, constitute the heart of the programme.

Each precision instrument bears its own serial number and passes a strict performance control attested by an individual QC certificate.

The Socorex Service Center offers a global repair and calibration programme. The choices range from basic maintenance to accredited calibrations of all micropipettes and dispensers according to ISO 17025 – whatever their brand.



Sylvain Christen, CEO

Jean-Pierre Uldry,  
Director of Engineering

Pascal Durand, Admin.  
and Finance Manager

Beatriz Grasset,  
Customer Service Coordinator

Laurence Louy-Drevici,  
Business Development

Tatjana Van Bogaert,  
CEO Assistant

Thérèse Valenziano,  
Customer Service

Prisca Buchs,  
Customer Service

# ision liquid handling

## Our customers

We are proud to include virtually all private, industrial, academic and government laboratories as our customers.

Those are involved in routine research and educational activities in fields as diverse as life sciences – such as biotechnology and molecular biology – medicine, chemistry, pharmacology, environment, agriculture, etc.

Scientists are served efficiently by the dedicated network of Socorex distributors. Selected amongst the best suppliers, they carry an inventory of our products and provide technical support, repair and calibration services.

Find your closest Socorex partners listed on [www.socorex.com](http://www.socorex.com)



## Quality achievements

Socorex's dedication to precision and quality has been an all-time tradition. Our commitment to manufacturing the most reliable instruments and offering the best services was formalised with the completion of the ISO 9001 and ISO 13485 Quality Management System certifications.

Product lines used in the In Vitro Diagnostics fields conform to the IVD 98/79 EEC directive for medical devices and are CE certified accordingly.

Instruments are designed to operate under national and international standards such as ISO 8655, GLP, GMP and NCCLS.

Warranty coverage is three years on all manual pipettors, two years on electronic pipettes, dispensers and repeaters.

## Product range

### Electronic micropipettes

**Acura® *electro***

3

### Digital reading micropipettes

**Acura® *manual***  
**and Acura® *manual XS***

7

### Digital setting micropipettes

**Calibra® *digital***

15

### Positive displacement pipettes

**Acura® *positive***

17

### Repeater pipette

**Stepper™ / EcoStep™**

18

### Microdispenser pipettes

**Acura® *manual***

19

### Low-profile dispensers

**Acurex™ *compact***

20

### Bottle-top dispensers

**Calibrex™ *digital***

21

### Laboratory syringes

**Dosys™**

25

### Pipette controllers

**Profiler™ / Profillette™**

29

### Work stations

32

### Pipette tips / consumables

**Qualitips®**

33

### Service center

37



Diana Krattinger,  
Customer Service

Susanne Henry, Communication  
Project Manager

Stephanie Boegli,  
Service Center

Yves Liechti,  
Logistics Manager

Yves Lachavanne, Marketing  
and Sales Support Manager

Pascal Forestier, Technical  
Support Manager

Jean-Pierre Cattin,  
Production Manager

Jean-Marc Ammann, Quality  
and Regulatory Affairs Manager

# Acura<sup>®</sup> *electro* electronic micropipettes



Latest up-grade of a successful line making electronic pipetting simpler and safer than ever. The microprocessor-controlled instrument includes intuitive software avoiding any complicated programming steps. No particular skills are required to get quick access to six working modes and many volumes to select from. Two-year warranty.

## The Acura<sup>®</sup> *electro* models 926XS micro, 936 macro, 956 multi

### Product advantages

- Optimal ergonomics, light weight
- Easy, intuitive, self-teaching programme
- Large display, reversible for right or left reading
- Swift-interchange battery pack
- Fast charge, long working autonomy
- Adjustable tip ejector\* fitting most tips
- Pipetting cycle counter
- 27 interchangeable volumetric modules all fitting same control unit

\* Socorex patented



### Natural ergonomics ①

The Acura<sup>®</sup> *electro* offers shape, balance and working ergonomics resembling those of a manual instrument. But comfort is so greatly improved that pipetting and result consistency are just outstanding.

### Unique "right or left" display reading ②

Display converts instantly to right or left side reading. All information clearly presented and visible at a glance during programming, pipetting and calibration steps.

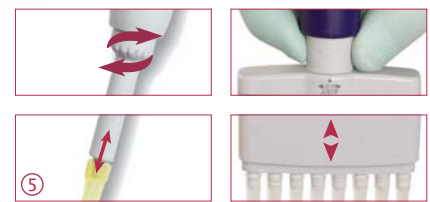


### Variable working speed ③

Located on the front side, speed selector allows swift change even during the pipetting process. In addition, slow speed access at any time by gentle touch of start button.

### Pipetting cycle counter ④

A simple double click gives access to the number of pipetting cycles performed since last zeroing.



### Tip ejection - easier than ever ⑤

Maximal efficiency obtained with a large surface, ergonomically located ejector button. The shaft height adjustment system called Justip<sup>™</sup> (4 mm span) - controlled by efficient click-stops - allows a wide selection of tips to tightly fit the nozzle.

The multichannel bowed shape ejector head permits effortless, sequential tip ejection.

### Great built-in working flexibility

Surf through mode selection by pressing a single button.

#### Forward mode

Aspiration and pipetting of set volume. Suitable for all applications.

#### Reverse mode

Aspiration in excess, followed by dosing of set volume. Enhances reproducibility below 20 µL. Especially recommended for viscous and foaming liquids.

#### Stepper mode

Tip filling and step-by-step distribution. Best suited to aliquot samples.

#### Dilution mode

Aspiration of 2 or 3 different volumes for restitution in one shot. An easy way to dilute samples.

#### Tactile mode

“Start and stop” liquid measurement, titration and gel loading by simple touch of activation button.

#### Mixing

“Up and down” liquid flow in the tip / vial.



### Interchangeable volumetric modules ③

One control unit fits a choice of 27 volumetric assemblies available separately. This greatly extends working possibilities and makes electronic pipetting affordable to all budgets. Disassembling and re-assembling without any tool contributes towards maximal flexibility. Calibration specificities of extra modules - as set by factory QC or by pipette owner - are retained in instrument memory.



### Pipette charging stand ①

Stand allows charging and storing up to three electronic pipettes or battery packs simultaneously. Each position is fitted with a red/green charging LED. One stand supplied with every initial package.

### Battery charging rack ②

Space saving stand holds up to three battery packs simultaneously. The ideal charging and storage accessory for spare batteries, available at any time.



### Calibration ④

Control software gives immediate access to calibration menu. Performance check possible over two or three independent volumes (Vmin, Vmid and Vmax). New settings entered directly from the keyboard. Error message warns of any inaccurate plunger movement.



### Long working autonomy ⑤

NiMH battery pack exchangeable instantly. Fast battery charging (< 1.5 hours) and extended working autonomy (> 3000 consecutive pipetting cycles). Battery charge level clearly visible on display. Automatic energy saving stand-by when unused.



## 926XS micro

- 0.1 - 2 µL
- 0.5 - 10 µL
- 1 - 20 µL
- 2.5 - 50 µL
- 5 - 100 µL
- 10 - 200 µL
- 50 - 1000 µL



## 936 macro

- 0.1 - 2 mL
- 0.25 - 5 mL
- 0.5 - 10 mL

## 956 multi

- 0.5 - 10 µL
- 2.5 - 50 µL
- 10 - 200 µL
- 20 - 350 µL

### The Acura<sup>®</sup> electro product advantages

#### Micropipettes

- Reduced shaft length and conical end improve driveability
- Easy access to microtubes and microplates
- Optional longer volumetric modules
- Simple conversion by user at any time
- Unsurpassed metrological performance and stability

#### Macropipettes

- Interchangeable nozzle protection filter
- Adapters for Pasteur pipette and straw tips
- Outstanding accuracy and precision

#### Multichannel

- Large selection of 8- and 12-channel models
- Light weight and perfect hand fitting
- Sequential tip ejection
- Also fit any single channel volumetric module

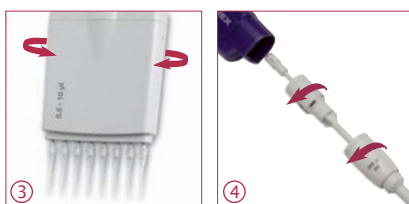


#### Nozzle protection filter ①

Macro models accommodate a filter protecting instrument against liquid overflow and contamination. Located in the nozzle, it can be removed and changed easily.

#### Pasteur pipette - straw tip adapters ②

Optional accessories fit 2 mL glass Pasteur pipettes or 5 mL straw tip instead of Polypropylene tips.



#### Optimal working position ③

360° rotation of multichannel volumetric modules allows selection of the best working position.

#### Time efficient maintenance ④

Pipette construction limits maintenance to a minimum - no tool required to remove volumetric module. The pipetting cycle counter facilitates maintenance monitoring.

Whenever sterilisation is needed, volumetric modules can be autoclaved t 121 °C / 250 °F.



#### Initial package ⑤

Recommended when purchasing an Acura<sup>®</sup> electro for the first time, each initial package contains one electronic pipette, QC certificate and operating instructions, charging stand, power supply, additional battery pack, Qualitips<sup>®</sup> pipette tips samples. Thereafter, additional pipettes can be purchased alone and charged on existing stand.

## Performance and ordering information - Instruments

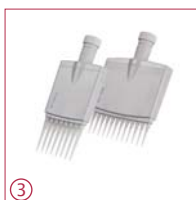
Initial package includes pipette, charging stand and accessories. Additional pipettes (alone) supplied with individual QC certificate, Qualitips<sup>®</sup> pipette tips samples and operating instructions.

Volume	Division	Inaccuracy (E%)			Imprecision (CV%)			Tip style	Cat. No. Initial package*	Cat. No. Pipette alone
		Min. vol.	Mid. vol.	Max. vol.	Min. vol.	Mid. vol.	Max. vol.			
<b>Micropipettes Acura<sup>®</sup> electro 926XS</b>										
0.1 - 2 µL	0.01 µL	<+/- 2.5 % <sup>1)</sup>	<+/- 1.2 %	<+/- 0.9 %	< 2.5 % <sup>1)</sup>	< 1.5 %	< 0.8 %	Ultra 10 µL	926.0002E	926.0002
0.5 - 10 µL	0.05 µL	<+/- 1.2 % <sup>2)</sup>	<+/- 0.8 %	<+/- 0.6 %	< 1.5 % <sup>2)</sup>	< 0.7 %	< 0.35 %	Ultra 10 µL	926.0010E	926.0010
0.5 - 10 µL	0.05 µL	<+/- 1.2 % <sup>2)</sup>	<+/- 0.8 %	<+/- 0.6 %	< 1.7 % <sup>2)</sup>	< 0.8 %	< 0.4 %	200 µL	926.0010YE	926.0010Y
1 - 20 µL	0.1 µL	<+/- 1.2 % <sup>2)</sup>	<+/- 0.6 %	<+/- 0.5 %	< 1.2 % <sup>2)</sup>	< 0.4 %	< 0.3 %	200 µL	926.0020E	926.0020
2.5 - 50 µL	0.25 µL	<+/- 1.0 % <sup>2)</sup>	<+/- 0.6 %	<+/- 0.5 %	< 0.7 % <sup>2)</sup>	< 0.3 %	< 0.25 %	200 µL	926.0050E	926.0050
5 - 100 µL	0.5 µL	<+/- 1.0 % <sup>2)</sup>	<+/- 0.6 %	<+/- 0.5 %	< 0.7 % <sup>2)</sup>	< 0.3 %	< 0.2 %	200 µL	926.0100E	926.0100
10 - 200 µL	1.0 µL	<+/- 1.0 % <sup>2)</sup>	<+/- 0.6 %	<+/- 0.4 %	< 0.6 % <sup>2)</sup>	< 0.2 %	< 0.15 %	200 µL	926.0200E	926.0200
50 - 1000 µL	5.0 µL	<+/- 0.8 % <sup>2)</sup>	<+/- 0.5 %	<+/- 0.4 %	< 0.4 % <sup>2)</sup>	< 0.15 %	< 0.1 %	1000 µL	926.1000E	926.1000
<b>Macropipettes Acura<sup>®</sup> electro 936</b>										
0.1 - 2 mL	0.01 mL	<+/- 1.5 % <sup>2)</sup>	<+/- 1.0 %	<+/- 0.5 %	< 0.6 % <sup>2)</sup>	< 0.3 %	< 0.15 %	2 mL	936.02E	936.02
0.25 - 5 mL	0.05 mL	<+/- 1.2 % <sup>2)</sup>	<+/- 0.8 %	<+/- 0.5 %	< 0.6 % <sup>2)</sup>	< 0.3 %	< 0.15 %	5 mL	936.05E	936.05
0.5 - 10 mL	0.05 mL	<+/- 1.0 % <sup>2)</sup>	<+/- 0.7 %	<+/- 0.5 %	< 0.5 % <sup>2)</sup>	< 0.2 %	< 0.15 %	10 mL	936.10E	936.10
<b>8-channel pipettes Acura<sup>®</sup> electro 956</b>										
0.5 - 10 µL	0.05 µL	<+/- 3.5 % <sup>2)</sup>	<+/- 1.5 %	<+/- 1.0 %	< 3.0 % <sup>2)</sup>	< 0.9 %	< 0.7 %	Ultra 10 µL	956.08.010E	956.08.010
2.5 - 50 µL	0.25 µL	<+/- 1.0 % <sup>2)</sup>	<+/- 0.9 %	<+/- 0.8 %	< 1.0 % <sup>2)</sup>	< 0.6 %	< 0.4 %	200 µL	956.08.050E	956.08.050
10 - 200 µL	1.0 µL	<+/- 0.9 % <sup>2)</sup>	<+/- 0.7 %	<+/- 0.6 %	< 0.6 % <sup>2)</sup>	< 0.4 %	< 0.25 %	200 µL	956.08.200E	956.08.200
20 - 350 µL	5.0 µL	<+/- 1.0 % <sup>2)</sup>	<+/- 0.8 %	<+/- 0.6 %	< 0.6 % <sup>2)</sup>	< 0.4 %	< 0.25 %	350 µL	956.08.350E	956.08.350
<b>12-channel pipettes Acura<sup>®</sup> electro 956</b>										
0.5 - 10 µL	0.05 µL	<+/- 3.5 % <sup>2)</sup>	<+/- 1.5 %	<+/- 1.0 %	< 3.0 % <sup>2)</sup>	< 0.9 %	< 0.7 %	Ultra 10 µL	956.12.010E	956.12.010
2.5 - 50 µL	0.25 µL	<+/- 1.0 % <sup>2)</sup>	<+/- 0.9 %	<+/- 0.8 %	< 1.0 % <sup>2)</sup>	< 0.6 %	< 0.4 %	200 µL	956.12.050E	956.12.050
10 - 200 µL	1.0 µL	<+/- 0.9 % <sup>2)</sup>	<+/- 0.7 %	<+/- 0.6 %	< 0.6 % <sup>2)</sup>	< 0.4 %	< 0.25 %	200 µL	956.12.200E	956.12.200
20 - 350 µL	5.0 µL	<+/- 1.0 % <sup>2)</sup>	<+/- 0.8 %	<+/- 0.6 %	< 0.6 % <sup>2)</sup>	< 0.4 %	< 0.25 %	350 µL	956.12.350E	956.12.350

Performance values obtained in Forward mode with bi-dist. water at constant temperature (± 0.5°C) comprised between 20 and 25°C in accordance with ISO 8655. Performance measured at: <sup>1)</sup> 0.5 µL, <sup>2)</sup> 10% of nominal volume

\* Replace E by country code if other plug type than Europe style needed: G = UK, U = USA-Japan, A = Australia-NZ

## Ordering information - Volumetric modules and accessories



Volume range	Tip style	Cat. No.
<b>Single channel microvolumetric ①</b>		
<b>Reduced shaft length</b>		
0.1 - 2 µL	Ultra 10 µL	800.0002XS
0.5 - 10 µL	Ultra 10 µL	800.0010XS
0.5 - 10 µL	200 µL	800.0010YXS
1 - 20 µL	200 µL	800.0020XS
2.5 - 50 µL	200 µL	800.0050XS
5 - 100 µL	200 µL	800.0100XS
10 - 200 µL	200 µL	800.0200XS
50 - 1000 µL	1000 µL	800.1000XS
<b>Regular shaft length ①</b>		
0.1 - 2 µL	Ultra 10 µL	800.0002
0.5 - 10 µL	Ultra 10 µL	800.0010
0.5 - 10 µL	200 µL	800.0010Y
1 - 20 µL	200 µL	800.0020
2.5 - 50 µL	200 µL	800.0050
5 - 100 µL	200 µL	800.0100
10 - 200 µL	200 µL	800.0200
50 - 1000 µL	1000 µL	800.1000

Volume range	Tip style	Cat. No.
<b>Single channel macrovolumetric ②</b>		
0.1 - 2 mL	2 mL	800.2000
0.25 - 5 mL	5 mL	800.5000
0.5 - 10 mL	10 mL	800.10000
<b>8-channel microvolumetric ③</b>		
0.5 - 10 µL	Ultra 10 µL	800.08.010
2.5 - 50 µL	200 µL	800.08.050
10 - 200 µL	200 µL	800.08.200
20 - 350 µL	350 µL	800.08.350
<b>12-channel microvolumetric ③</b>		
0.5 - 10 µL	Ultra 10 µL	800.12.010
2.5 - 50 µL	200 µL	800.12.050
10 - 200 µL	200 µL	800.12.200
20 - 350 µL	350 µL	800.12.350

Description	Pack	Cat. No.
<b>Charging units, 3 positions</b>		
Stand for pipettes or battery packs ④	1 / pk	320.903.48
Stand for power handles only ⑤	1 / pk	320.913.48
<b>Spare battery, blue colour</b>		
NiMH, 4.8V	1 / pk	900.920.48
NiMH, 4.8V	1 / pk	900.922.48
<b>Power supply, 100-240V</b>		
Europe style plug	1 / pk	900.901.48E
UK style plug	1 / pk	900.901.48G
USA-Japan style plug	1 / pk	900.901.48U
Australia - NZ style plug	1 / pk	900.901.48A
<b>Nozzle protection filters</b>		
For 2 and 5 mL models	250/pk	322.05
For 10 mL model	100/pk	322.10
<b>Adapter-nozzle - Pasteur pipette</b>		
For 5 mL model	1 / pk	1.835.633
<b>Adapter - 5 mL straw tip</b>		
For 2 and 5 mL models	1 / pk	1.831.707

See Qualitips<sup>®</sup> page 33

# Acura® manual and Acura® manual XS digital reading micropipettes



The Acura® manual are precision pipettes combining high-tech materials with exceptional, user friendly ergonomics. There is a choice between 825 model, the classic one for all applications and 826 XS micropipette specially dedicated to research. Both lines bring much more than superior performance and make pipetting safe and agreeable. Three-year warranty.

## The Acura® manual 825 / 826 XS

### Product advantages

- Smart and reliable volume adjustment
- Single-handed volume setting
- Precision digital display visible at all time
- Justip™ adjustable tip ejector\* fitting most tips
- Swift-set user calibration system\*
- Shock, UV-light and autoclaving resistance
- CE certified IVD 98/79 EEC

\* Socorex patented

### Most comfortable pipetting ①

The Acura® manual fits everybody's hand with or without glove. Ergonomic shape, light weight and soft plunger travel care for better comfort.



### Ejector button ②

Ergonomically positioned, the large surface, soft padded ejector provides for low-pressure activation.



### Adjustable tip ejection ③ ④

Ejector shaft height adjustment system called Justip™ allows a wide selection of tips to tightly fit the nozzle.



### Minimum maintenance / sterilisation ⑤

Easy disassembling for thorough cleaning. Sterilisation achieved by autoclaving instrument fully assembled (121°C / 250°F)



**825**  
micro

- 0.1 – 2 µL
- 0.5 – 10 µL
- 1 – 10 µL
- 2 – 20 µL
- 5 – 50 µL
- 10 – 100 µL
- 20 – 200 µL
- 100 – 1000 µL



## Performance and tip style - Acura® manual 825 and 826 XS micropipettes

Volume	Division	Inaccuracy (E%)			Imprecision (CV%)			Tip style
		Min. vol.	Mid. vol.	Max. vol.	Min. vol.	Mid. vol.	Max. vol.	
0.1 – 2 µL	0.002 µL	< ± 6.0% <sup>1)</sup>	< ± 4.0%	< 2.0%	< 5.0% <sup>1)</sup>	< 3.3%	< 1.5%	Ultra 10 µL
0.5 – 10 µL	0.01 µL	< ± 2.5% <sup>2)</sup>	< ± 1.8%	< 1.0%	< 1.8% <sup>2)</sup>	< 1.2%	< 0.5%	Ultra 10 µL
1 – 10 µL	0.01 µL	< ± 2.5%	< ± 1.8%	< 1.0%	< 2.5%	< 1.6%	< 0.7%	200 µL
2 – 20 µL	0.02 µL	< ± 2.5%	< ± 1.8%	< 1.0%	< 1.7%	< 1.1%	< 0.5%	200 µL
5 – 50 µL	0.1 µL	< ± 1.5%	< ± 1.3%	< 1.0%	< 1.0%	< 0.7%	< 0.4%	200 µL
10 – 100 µL	0.1 µL	< ± 1.5%	< ± 1.2%	< 0.8%	< 1.0%	< 0.6%	< 0.2%	200 µL
20 – 200 µL	0.2 µL	< ± 1.5%	< ± 1.1%	< 0.6%	< 0.6%	< 0.4%	< 0.2%	200 µL
100 – 1000 µL	1 µL	< ± 1.5%	< ± 1.0%	< 0.5%	< 0.5%	< 0.4%	< 0.2%	1000 µL

Performance values obtained with bidest. water at constant temperature (± 0.5°C) comprised between 20 and 25°C in accordance with ISO 8655.

<sup>1)</sup> measured at 0.5 µL <sup>2)</sup> measured at 1 µL

**extra sharp**

digital reading micropipettes XS



## 826 XS

extra sharp

- 0.1 - 2 µL
- 0.5 - 10 µL
- 1 - 10 µL
- 2 - 20 µL
- 5 - 50 µL
- 10 - 100 µL
- 20 - 200 µL
- 100 - 1000 µL

Derived from the Acura® manual 825, the 826 XS line was designed with the research scientists in mind. Shorter, smoother, lighter in weight, the eight models offer key features aiming at excellence in pipetting.

### The Acura® manual XS 826

#### Added advantages, distinct from 825 line

- Excellent ergonomic shape and size ratio
- New springs and tightness seal for extra-smooth activation
- Reduced weight - lighter than leading brands (see weight chart below)
- Increased drivability with short, narrow shaft
- Conical shaft end for easy reach in smaller microtubes



Short shaft enhances precision of hand movement and guarantees superior drivability. A great help in fine applications such as pipetting in microtubes or microplates.



#### Instant calibration ① ②

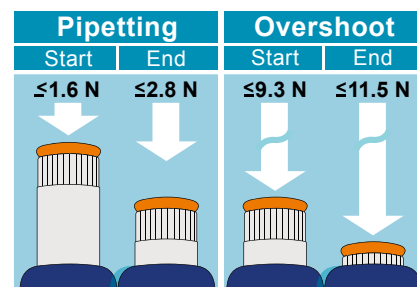
Swift-set user calibration system - with integrated key and locking mechanism - makes tedious procedures a thing of the past. Easy and precise, it is in full compliance with international standards and recommendations.

#### Safety seal ③

Though easily removed when needed, the switch protection seal is autoclaving resistant.

#### Calibration seal stickers

Replacement seals	25 / pk	1.825.025
Replacement seals	100 / pk	1.825.100



#### Extra smooth activation

Unique tightness lip seal and new springs provide for ultra-soft pipetting, reducing hand fatigue while working. Above forces, measured on a 20 - 200 µL model, are indicative of very limited finger efforts. Yet, the overshoot stop offers a clear tactile indicator.

\* 1 Newton (N) ~ 0.1 kilogramme force (kgf)

#### Weights and ordering information - Acura® manual 825 and 826 XS

Volume	Weights		Cat. No.	
	825	826 XS	825	826 XS
0.1 - 2 µL	88 gr	84 gr	825.0002	826.0002
0.5 - 10 µL	88 gr	84 gr	825.0010	826.0010
1 - 10 µL	88 gr	85 gr	825.0010Y	826.0010Y
2 - 20 µL	88 gr	85 gr	825.0020	826.0020
5 - 50 µL	90 gr	86 gr	825.0050	826.0050
10 - 100 µL	92 gr	87 gr	825.0100	826.0100
20 - 200 µL	90 gr	86 gr	825.0200	826.0200
100 - 1000 µL	95 gr	88 gr	825.1000	826.1000

See Qualitips® page 33

# micropipette saver packs and smarties

Pipette packs offer an extended choice of volume combinations, covering all individual requirements in any research or routine application. Available at attractive saver prices, they match with today's budget constraints.



## The Acura® manual 825 / 835 Triopack

- Three adjustable micropipettes
- Large choice of volume combinations up to 10 ml
- Nine different packs

### Ordering information - Triopack

Including: sampling of Qualitips®, silicone grease, Q.C. certificates and operating instructions

Pack	Contents (Micro / macropipette models)			Cat. No.	Pack	Contents (Micro / macropipette models)			Cat. No.	Pack	Contents (Micro / macropipette models)			Cat. No.
C	2 µL (0.1 - 2)	10 µL (0.5 - 10)	50 µL (5 - 50)	825.TRIO.C	O	10 µL (0.5 - 10)	100 µL (10 - 100)	1000 µL (100 - 1000)	825.TRIO.O	T	50 µL (5 - 50)	200 µL (20 - 200)	1000 µL (100 - 1000)	825.TRIO.T
J	2 µL (0.1 - 2)	20 µL (2 - 20)	200 µL (20 - 200)	825.TRIO.J	P	10Y µL (1 - 10)	100 µL (10 - 100)	1000 µL (100 - 1000)	825.TRIO.P	V	100 µL (10 - 100)	1000 µL (100 - 1000)	5 mL (0.5 - 5)	825.TRIO.V
M	10Y µL (1 - 10)	50 µL (5 - 50)	200 µL (20 - 200)	825.TRIO.M	S	20 µL (2 - 20)	200 µL (20 - 200)	1000 µL (100 - 1000)	825.TRIO.S	Y	1000 µL (100 - 1000)	5 mL (0.5 - 5)	10 mL (1 - 10)	835.TRIO.Y

## The Acura® manual 826 TwiXS pack

- Two adjustable volume pipettes
- Free shelf pipette holder (see page 14)
- Volume combinations up to 1000 µL
- Six different packs

### Ordering information - TwiXS pack

Including: shelf pipette holder, sampling of Qualitips®, silicone grease, Q.C. certificates and operating instructions

Pack	Contents (micropipettes)		Cat. No.
E	2 µL (0.1 - 2)	20 µL (2 - 20)	826.TWX.E
G	10 µL (0.5 - 10)	100 µL (10 - 100)	826.TWX.G
H	20 µL (2 - 20)	200 µL (20 - 200)	826.TWX.H
K	50 µL (5 - 50)	200 µL (20 - 200)	826.TWX.K
N	100 µL (10 - 100)	1000 µL (100 - 1000)	826.TWX.N
Q	200 µL (20 - 200)	1000 µL (100 - 1000)	826.TWX.Q



## Smarties caps

### Colour coding at will

All Acura® pipettes have colour-coded button caps for individual, lab or department identifications. Pick among 14 colours or choose the smartie mix for other colour combinations.

Colour	Cat. No.	Colour	Cat. No.
Alternative colour selection (6 / pk)			
White	1.825.710	Rose	1.825.719
Grey	1.825.715	Pink	1.825.720
Vanilla	1.825.716	Purple	1.825.721
Lemon	1.825.712	Ice blue	1.825.722
Yellow	1.825.717	Blue	1.825.713
Orange	1.825.718	Mint	1.825.723
Red	1.825.714	Green	1.825.711
Assorted colours (14 / pk)			1.825.700



Instruments combining high-tech materials with user-friendly ergonomics. Optimal for in- and outdoor environmental analysis, clinical chemistry and cell culture applications, they offer superior performance and make pipetting safer than ever. Three-year warranty.

### The Acura® manual 835

#### Product advantages

- Smart and reliable volume adjustment
- Single-handed volume setting
- Interchangeable nozzle protection filter
- Justip™ adjustable tip ejector\* fitting most tips
- Swift-set user calibration system\*
- Shock, UV-light and autoclaving resistance
- Pasteur pipette fitting 2 and 5 mL models

\* Socorex patented

#### Display always visible ①

Located on the front of the instrument, the display window allows set volume to be visible at all times during pipetting. A comforting reassurance for the user.



#### Smart and reliable ② volume adjustment

State-of-the-art micrometric volume setting is performed smoothly and precisely by turning push button. Finely machined click-stops and free rotating cap prevent any unwanted volume alteration.



#### Patented tip ejector system ③ ④

Ergonomically positioned, the large surface, soft padded ejector provides for low-pressure activation. In addition, the shaft height adjustment system called Justip™ allows optimal distance setting between ejector and tip.



#### Pasteur pipette adapter ⑤

Adapter nozzles allow fitting of Pasteur pipette on Acura® manual 2 and 5 mL models in addition to Polypropylene tips. The adapters have two O-rings guaranteeing proper holding and tightness of standard 2 mL Pasteur pipettes (Ø 7 mm).



#### Nozzle protection filter ⑥

Protection against liquid overflow and contamination.

## 835

macro

0.2 - 2 mL  
0.5 - 5 mL  
1 - 10 mL



See consumables page 36

#### Performance and ordering information

Volume	Division	Inaccuracy (E%)			Imprecision (CV%)			Tip style	Cat. No.
		Min. vol.	Mid. vol.	Max. vol.	Min. vol.	Mid. vol.	Max. vol.		
0.2 - 2 mL	0.002 mL	< ± 1.5%	< ± 1.0%	< ± 0.5%	< 0.5%	< 0.3%	< 0.2%	2 mL	835.02
								2 mL + Pasteur	835.02PP <sup>1)</sup>
0.5 - 5 mL	0.01 mL	< ± 1.5%	< ± 1.1%	< ± 0.6%	< 0.6%	< 0.5%	< 0.3%	5 mL	835.05
								5 mL + Pasteur	835.05PP <sup>1)</sup>
1 - 10 mL	0.01 mL	< ± 1.5%	< ± 0.7%	< ± 0.5%	< 0.5%	< 0.3%	< 0.2%	10 mL	835.10

Performance values obtained with bidest. water at constant temperature (± 0.5°C) comprised between 20 and 25°C in accordance with ISO 8655.

<sup>1)</sup> Model includes Pasteur adapter nozzle.

Fixed volume micro and macropipettes show the most stable performance. They provide consistent results for any analytical or routine diagnostic tests by eliminating the risk of erroneous volume setting. Three year warranty.

### The Acura® manual 815 / 835F

#### Product advantages

- Slim ergonomic design and light weight
- Soft plunger activation
- Justip™ adjustable tip ejector\* fitting most tips
- User calibration with integrated key
- Colour coded smartie cap
- Selection includes macropipette volumes

\* Socorex patented



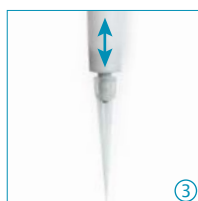
**815 / 835F**  
fixed

1 µL to 10 mL



#### Tip ejection - easier than ever

Most ergonomically positioned, ① ② ③ the large surface, soft padded ejector button provides for low-pressure activation. In addition to ease of tip ejection, the shaft height adjustment system called Justip™ - controlled by efficient click-stops - allows a wide selection of tips to tightly fit the nozzle.



#### Performance and ordering information

Volume	Inaccuracy (E%)	Imprecision (CV%)	Tip style	Cat. No.
<b>Acura® manual 815</b>				
1 µL	< ± 2.0%	< 1.0%	Ultra 10 µL	815.0001
5 µL	< ± 1.4%	< 1.0%	Ultra 10 µL	815.0005
10 µL	< ± 0.7%	< 0.7%	Ultra 10 µL	815.0010
10Y µL	< ± 0.7%	< 0.8%	200 µL	815.0010Y
15 µL	< ± 0.7%	< 0.5%	200 µL	815.0015
20 µL	< ± 0.75%	< 0.5%	200 µL	815.0020
25 µL	< ± 0.7%	< 0.6%	200 µL	815.0025
30 µL	< ± 0.7%	< 0.6%	200 µL	815.0030
32 µL	< ± 0.7%	< 0.6%	200 µL	815.0032
40 µL	< ± 0.7%	< 0.5%	200 µL	815.0040
50 µL	< ± 0.7%	< 0.4%	200 µL	815.0050
60 µL	< ± 0.7%	< 0.5%	200 µL	815.0060
70 µL	< ± 0.7%	< 0.4%	200 µL	815.0070
75 µL	< ± 0.7%	< 0.4%	200 µL	815.0075
80 µL	< ± 0.7%	< 0.35%	200 µL	815.0080
90 µL	< ± 0.7%	< 0.3%	200 µL	815.0090
100 µL	< ± 0.7%	< 0.3%	200 µL	815.0100
120 µL	< ± 0.7%	< 0.4%	200 µL	815.0120

Volume	Inaccuracy (E%)	Imprecision (CV%)	Tip style	Cat. No.
<b>Acura® manual 815 (Continued)</b>				
150 µL	< ± 0.7%	< 0.3%	200 µL	815.0150
200 µL	< ± 0.7%	< 0.3%	200 µL	815.0200
250 µL	< ± 0.7%	< 0.4%	1000 µL	815.0250
300 µL	< ± 0.7%	< 0.4%	1000 µL	815.0300
400 µL	< ± 0.7%	< 0.3%	1000 µL	815.0400
500 µL	< ± 0.7%	< 0.3%	1000 µL	815.0500
600 µL	< ± 0.7%	< 0.3%	1000 µL	815.0600
700 µL	< ± 0.7%	< 0.2%	1000 µL	815.0700
750 µL	< ± 0.7%	< 0.2%	1000 µL	815.0750
800 µL	< ± 0.7%	< 0.2%	1000 µL	815.0800
900 µL	< ± 0.7%	< 0.2%	1000 µL	815.0900
1000 µL	< ± 0.6%	< 0.2%	1000 µL	815.1000

#### Acura® manual 835F

2 mL	< ± 0.8%	< 0.5%	2 mL	835.F02
2.5 mL	< ± 0.8%	< 0.5%	5 mL	835.F02.5
5 mL	< ± 0.7%	< 0.3%	5 mL	835.F05
10 mL	< ± 0.5%	< 0.2%	10 mL	835.F10

Performance values obtained with bidest. water at constant temperature (± 0.5°C) comprised between 20 and 25°C in accordance with ISO 8655.

See Qualitips® page 33

Built with the users in mind, these pipettes combine high-tech materials with exceptional, user-friendly ergonomics. They extend pipetting possibilities in 96-well microplates and guarantee outstanding performance and results. Three-year warranty.

## 855 multi

0.5 - 10 µL  
5 - 50 µL  
20 - 200 µL  
40 - 350 µL

### The Acura® manual 855

#### Product advantages

- 8- and 12-channel models up to 350 µL
- Light weight and perfect hand fitting
- Precision digital display visible at all time
- Justip™ adjustable tip ejector\* fitting most tips
- Swift-set user calibration system\*
- 360° rotation of volumetric module

\* Socorex patented



#### Most comfortable pipetting

Ergonomic shape, lightweight and ultra-soft plunger travel are key elements of the Acura® manual pipettes.

855 models	Weight
8x 0.5 - 10 µL	155 gr
8x 5 - 50 µL	165 gr
8x 20 - 200 µL	165 gr
8x 40 - 350 µL	168 gr
12x 0.5 - 10 µL	184 gr
12x 5 - 50 µL	199 gr
12x 20 - 200 µL	201 gr
12x 40 - 350 µL	203 gr



#### Optimal working position ①

Revolving over 360°, the volumetric module (lower assembly) helps reaching the appropriate hand position.

#### Adjustable tip ejector ②

Position of tip ejector can be adjusted in no time within a 4 mm span to perfectly match with tips used. Bowed shape of ejector head guarantees effortless, easy sequential tip removal.

#### Multichannel reservoirs ③

Well adapted for multichannel pipettes, the reagent reservoirs offer various shapes and volumes.

[See consumables page 36](#)

#### Performance and ordering information

Volume	Division	Inaccuracy (E%)			Imprecision (CV%)			Tip style	Cat. No.
		Min. vol.	Mid. vol.	Max. vol.	Min. vol.	Mid. vol.	Max. vol.		
<b>8-channel</b>									
0.5 - 10 µL	0.01 µL	< ± 3.5% <sup>1)</sup>	< ± 2.5%	< ± 1.5%	< 3.0% <sup>1)</sup>	< 2.0%	< 1.0%	Ultra 10 µL	855.08.010
5 - 50 µL	0.1 µL	< ± 1.0%	< ± 0.9%	< ± 0.8%	< 1.0%	< 0.7%	< 0.4%	200 µL	855.08.050
20 - 200 µL	0.2 µL	< ± 0.9%	< ± 0.8%	< ± 0.7%	< 0.6%	< 0.5%	< 0.3%	200 µL	855.08.200
40 - 350 µL	0.4 µL	< ± 1.0%	< ± 0.9%	< ± 0.8%	< 0.6%	< 0.5%	< 0.3%	350 µL	855.08.350
<b>12-channel</b>									
0.5 - 10 µL	0.01 µL	< ± 3.5% <sup>1)</sup>	< ± 2.5%	< ± 1.5%	< 3.0% <sup>1)</sup>	< 2.0%	< 1.0%	Ultra 10 µL	855.12.010
5 - 50 µL	0.1 µL	< ± 1.0%	< ± 0.9%	< ± 0.8%	< 1.0%	< 0.7%	< 0.4%	200 µL	855.12.050
20 - 200 µL	0.2 µL	< ± 0.9%	< ± 0.8%	< ± 0.7%	< 0.6%	< 0.5%	< 0.3%	200 µL	855.12.200
40 - 350 µL	0.4 µL	< ± 1.0%	< ± 0.9%	< ± 0.8%	< 0.6%	< 0.5%	< 0.3%	350 µL	855.12.350

Performance values obtained with bidest. water at constant temperature (± 0.5°C) comprised between 20 and 25°C in accordance with ISO 8655.

<sup>1)</sup> measured at 1 µL

# 1:10 dilution pipette



Air displacement pipette with two pre-calibrated steps allows subsequent pipetting of 1 and 0.1 mL of the same liquid. Metal nozzle fits long straw tips to aspirate from narrow or deep reservoirs (i.e. Stomacher® bags). Ideal alternative to the graduated glass pipettes when performing serial 1:10 dilutions in bacteriology. Three-year warranty.

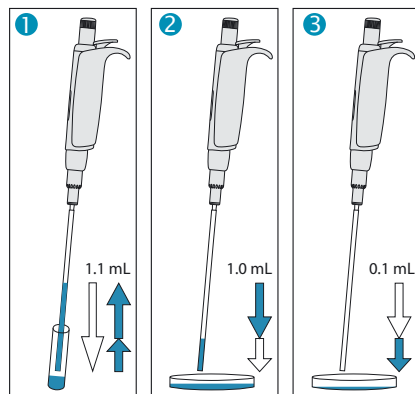
## 810

1 + 0.1 mL

### The Acura® manual 810

#### Product advantages

- Two pre-calibrated fixed volumes - no setting required
- Smooth activation, excellent ergonomics
- Interchangeable PE nozzle protection filter
- Justip™ system for height adjustment of tip ejector
- Independent calibration for each volume
- Easy maintenance, cleaning and disinfection
- Fully autoclavable 121°C / 250°F



#### Simple operation

- ① Depress plunger button in full, then release slowly to aspirate 1.1 mL
- ② Depress plunger button to first stop, thus dispensing 1 mL in Petri dish
- ③ Depress plunger button to second stop, thus dispensing residual 0.1 mL in next Petri dish



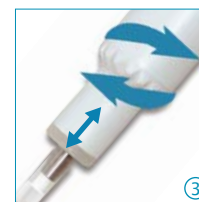
#### No setting required ①

Two fixed volumes within one plunger travel.



#### Innovative dual calibration ②

Both volumes of 1 mL and 0.1 mL can be calibrated independently from each other. Calibration switch protected by seal sticker.



#### Justip™ ejector ③

Turn left or right to adjust ejector to straw tip position on the nozzle.



#### Straw tips ④

First class polypropylene. Two sizes (190 and 240 mm) specially designed for narrow vials and Stomacher® bags. Large diameter (4mm) prevents blocking by particles in suspension.

#### Performance and ordering information - Instrument

Volume	Inaccuracy (E%)	Imprecision (CV%)	Cat. No.
1	< ± 0.5%	< 0.4%	810.1100
0.1 mL	< ± 2.0%	< 2.5%	

Performance values obtained with bidest. water at constant temperature (± 0.5°C) comprised between 20 and 25°C in accordance with ISO 8655.

#### Ordering information - Accessories

Description	Packaging	Cat. No.
Straw tips, polypropylene, sterilized (L: 190 mm, Ø:4 mm)	40x 25 / pk	313.1119.40
Straw tips, polypropylene, sterilized (L: 240 mm, Ø:4 mm)	40x 25 / pk	313.2224.40
Nozzle protection filter, PE material	100 / pk	322.810
Work station 340 for 3 pipettes	1 / pk	320.340
Shelf pipette holder 332 for 2 pipettes	1 / pk	320.332
Shelf pipette holder 332 for 2 pipettes	4 / pk	320.332.4



## 337

### 7-position work station

Space-saving pipette stand holds up to seven single-channel pipettes of most brands. Made of sturdy polyamide material, easy to clean. Anti-slip pads guarantee bench stability.



### Attractive pastel colours



## 340



### Universality ① ②

One for all, the work station fits new and old generations of Socorex® and other brand pipettes.

### Ordering information

Colour	Packaging	Cat. No.
<b>Universal 7 pipette work station 337</b>		
Light grey	1 / pk	320.337C
Pastel rose	1 / pk	320.337R
Ice blue	1 / pk	320.337B
Mint green	1 / pk	320.337M
Vanilla yellow	1 / pk	320.337Y

## 332



### Shelf pipette holder 332 for 2 instruments ③

Fitting two micro, macro and/or multichannel pipettes, the attractive design accommodates all Acura® and Calibra® instruments. The self-adhesive strip supplied ensures lasting attachment on any surface. Made of polycarbonate material.

### Ordering information

Colour	Packaging	Cat. No.
<b>Shelf pipette holder 332</b>		
Transparent blue	1 / pk	320.332
	4 / pk	320.332.4



### 3-position multi- and single-channel pipette work station

Innovative design fits all Calibra® and Acura® models. Easy reach of each instrument. Heavy bottom plate and anti-slip pads guarantee high stability. Made of polyamide material.

### Extended compatibility ④ ⑤

Work station 340 also fits the Acura® 810 dilution pipette and Acura® 865 microdispenser pipettes.

### Ordering information

Colour	Packaging	Cat. No.
<b>3 pipette work station 340</b>		
Light grey	1 / pk	320.340

# Calibra® digital digital setting micro and macropipettes



The combination of instant volume adjustment, mechanical precision and ease of use makes the Calibra® digital a most reliable and robust micropipette line in the market. Three-year warranty.

## The Calibra® digital 822 / 832

### Product advantages

- Winding-free, instant volume adjustment
- Long term performance and calibration stability
- Robust, long lasting construction
- Shock, UV-light and autoclaving resistance
- Reliable user calibration
- Minimal maintenance requirements
- CE certified IVD 98/79 EEC
- Interchangeable nozzle filter in all macro models

**822**  
micro

0.2 – 2 µL  
1 – 10 µL  
2 – 20 µL  
10 – 100 µL  
20 – 200 µL  
100 – 1000 µL



**832**  
macro

0.2 – 2 mL  
1 – 10 mL



Thin shaft shape helps reach contents from microtubes and/or narrow containers. The Calibra® provides convenient access into those hard to reach places.

### Instant volume setting

Twin cam system fitted with pre-calibrated steps providing for true digital volume entry and numerical display. The dual incrementation allows fast volume setting without tedious winding.



**Key volume adjustment ①**  
Example: from 10 to 50 µL in half a revolution of the setting wheel placed in its normal position.



**Fine-tuning adjustment ②**  
Example: from 50 to 55.5 µL in half a revolution of the setting wheel in its "pulled" position.

## Performance and ordering information

Volume	Division	Inaccuracy (E%)			Imprecision (CV%)			Tip style	Cat. No.
		Min. vol.	Mid. vol.	Max. vol.	Min. vol.	Mid. vol.	Max. vol.		
<b>Calibra® digital 822</b>									
0.2 – 2 µL	0.1 µL	< ± 6.0% <sup>1)</sup>	< ± 4.0%	< ± 2.0%	< 5.0% <sup>1)</sup>	< 3.3%	< 1.5%	Ultra 10 µL	822.0002
1 – 10 µL	0.05 µL	< ± 2.5%	< ± 1.5%	< ± 1.0%	< 2.0%	< 1.3%	< 0.5%	Ultra 10 µL	822.0010
1 – 10 µL	0.05 µL	< ± 2.5%	< ± 1.5%	< ± 1.0%	< 2.5%	< 1.6%	< 0.7%	200 µL	822.0010Y
2 – 20 µL	0.1 µL	< ± 2.5%	< ± 1.5%	< ± 1.0%	< 1.7%	< 1.1%	< 0.5%	200 µL	822.0020
10 – 100 µL	0.5 µL	< ± 1.5%	< ± 0.9%	< ± 0.8%	< 1.0%	< 0.6%	< 0.2%	200 µL	822.0100
20 – 200 µL	1.0 µL	< ± 1.5%	< ± 0.9%	< ± 0.6%	< 0.6%	< 0.4%	< 0.2%	200 µL	822.0200
100 – 1000 µL	5.0 µL	< ± 1.5%	< ± 0.6%	< ± 0.5%	< 0.5%	< 0.4%	< 0.2%	1000 µL	822.1000
<b>Calibra® digital 832</b>									
0.2 – 2 mL	0.01 mL	< ± 1.5%	< ± 1.0%	< ± 0.5%	< 0.5%	< 0.3%	< 0.2%	2 mL	832.02
1 – 10 mL	0.1 mL	< ± 1.5%	< ± 1.0%	< ± 0.5%	< 0.3%	< 0.3%	< 0.15%	10 mL	832.10

Performance values obtained with bidest. water at constant temperature (± 0.5°C) comprised between 20 and 25°C in accordance with ISO 8655.

1) measured at 0.5 µL

8- and 12-channel micropipettes with winding-free, instant volume adjustment extend pipetting possibilities in microplates. Three year warranty.

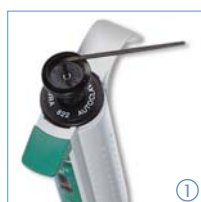
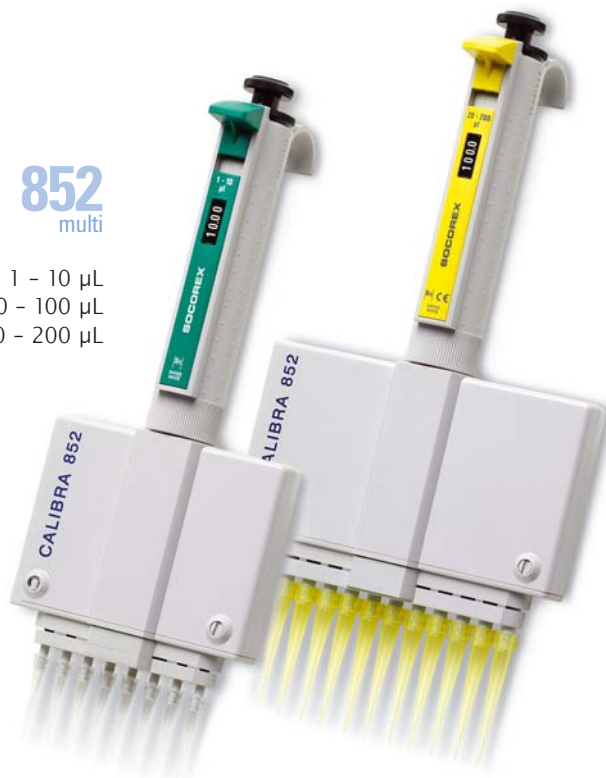
**852**  
multi

1 - 10 µL  
10 - 100 µL  
20 - 200 µL

## The Calibra® digital 852

### Product advantages

- Winding-free, instant volume adjustment
- Long term performance and calibration stability
- Lower assembly rotates 360° for optimal working comfort
- Easy sequential tip ejection
- Calibration simple to perform by user
- Shock, UV-light and autoclaving resistance
- CE certified IVD 98/79 EEC



### Easy in-lab calibration ① ②

The calibration screw is located under the rubber pad. Engraved graduations help calibrate instrument quickly and precisely. Calibration key supplied with the instrument.



### 360° rotation ③

In addition to ergonomic hand fitting, the pipette lower assembly revolves for added user comfort.



### Multichannel reservoirs ⑤

Well adapted for multichannel pipettes, the reagent reservoirs come in various shapes and volumes. See page 36.

See Qualitips® page 33 ⑥

See pipette stands page 32

### Sequential tip ejection ④

Special shape of ejector head guarantees effortless, sequential easy tip ejection.

## Performance and ordering information

Volume	Division	Inaccuracy (E%)			Imprecision (CV%)			Cat. No.
		Min. vol.	Mid. vol.	Max. vol.	Min. vol.	Mid. vol.	Max. vol.	
<b>8-channel</b>								
1 - 10 µL	0.05 µL	< ± 3.5%	< ± 2.5%	< ± 1.5%	< 3.0%	< 2.0%	< 1.0%	852.08.010
10 - 100 µL	0.5 µL	< ± 1.0%	< ± 0.9%	< ± 0.7%	< 1.0%	< 0.7%	< 0.4%	852.08.100
20 - 200 µL	1.0 µL	< ± 0.9%	< ± 0.9%	< ± 0.7%	< 0.6%	< 0.4%	< 0.3%	852.08.200
<b>12-channel</b>								
10 - 100 µL	0.5 µL	< ± 1.0%	< ± 0.9%	< ± 0.7%	< 1.0%	< 0.7%	< 0.4%	852.12.100
20 - 200 µL	1.0 µL	< ± 0.9%	< ± 0.9%	< ± 0.7%	< 0.6%	< 0.4%	< 0.3%	852.12.200

Performance values obtained with bidest. water at constant temperature (± 0.5°C) comprised between 20 and 25°C in accordance with ISO 8655.

# positive displacement micropipettes



Pipettes with ETFE-tipped plunger provide for positive displacement of sample in a precision capillary tube. Optimal accuracy and reproducibility when pipetting high-density, viscous, foaming or volatile liquids. Five models cover a range from 1 to 200 µL. Three-year warranty.

## The Acura® positive 841

### Product advantages

- Step-wise volume adjustment
- Interchangeable plunger and glass capillary
- Matching colour codes on pipette, plunger and capillary
- Stainless steel, ETFE-tipped plunger

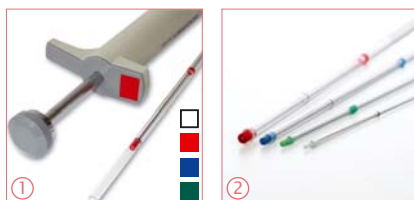
# 841

1 - 5 µL  
5 - 25 µL  
10 - 50 µL  
60 - 100 µL  
100 - 200 µL



### Work station

For two positive displacement pipettes (Cat. No. 320.333).



### Colour coding ①

Pipette, plunger tip and glass capillary bear colour coding for easy volume identification.

### ETFE-tipped plunger ②

Chemically inert ETFE material offers excellent resistance when coming in direct contact with liquids.

### Pre-set volumes ③

Each pipette has five, easy-to-adjust pre-set volumes. Clear volume indication on pipette barrel.

## Performance and ordering information - Instruments

Volumes	Inaccuracy (E%)			Imprecision (CV%)			Cat. No.
	Min. vol.	Mid. vol.	Max. vol.	Min. vol.	Mid. vol.	Max. vol.	
1-2-3-4-5 µL	< ± 3.0%	< ± 2.3%	< ± 2.0%	< 2.5%	< 2.0%	< 1.2%	841.005
5-10-15-20-25 µL	< ± 1.5%	< ± 1.2%	< ± 0.8%	< 1.0%	< 0.9%	< 0.6%	841.025
10-20-30-40-50 µL	< ± 1.2%	< ± 1.0%	< ± 0.7%	< 0.8%	< 0.7%	< 0.4%	841.050
60-75-80-90-100 µL	< ± 0.7%	< ± 0.7%	< ± 0.7%	< 0.6%	< 0.5%	< 0.3%	841.100
100-120-150-175-200 µL	< ± 0.7%	< ± 0.7%	< ± 0.7%	< 0.3%	< 0.3%	< 0.3%	841.200

Performance values obtained with bidest. water at constant temperature ( $\pm 0.5^\circ\text{C}$ ) comprised between 20 and 25°C in accordance with ISO 8655.

## Ordering information - Accessories

Colour code	Packaging	Cat. No.
<b>Spare glass capillaries</b>		
White	200 / pk	341.005
2x white	200 / pk	341.025
Green	200 / pk	341.050
Blue	200 / pk	341.100
Red	100 / pk	341.200

Colour code	Packaging	Cat. No.
<b>Spare plungers</b>		
Steel	5 / pk	342.005
White	5 / pk	342.025
Green	5 / pk	342.050
Blue	5 / pk	342.100
Red	5 / pk	342.200

# Stepper™ repeater pipette



Highly comfortable pipette intended for reliable repeat dispensing within 10 to 5000 µL. Unique trigger action mechanism eliminates thumb fatigue. Selected materials offer outstanding shock resistance. Compact shape greatly limits internal instrument contamination. Large selection among 53 different volumes; up to 73 doses per filling. Two-year warranty.



## The Stepper™ 411

### Product advantages

- 4-finger activation
- Setting knobs bear clear indication of volumes and number of aliquots
- Three positive displacement syringes, colour coded
- Self-locking mechanism

# 411

10 – 5000 µL



### Fingertip activation ③

User friendly 4-finger trigger action eliminates thumb fatigue during repeat dosing. Automatic safety lock prevents false delivery when dosing is completed.



### Clear setting indication ①②

After inserting disposable syringe, select appropriate volume. Markings on interchangeable selector buttons allow direct reading of set volume and corresponding number of aliquots.



### Colour coding

Ecostep™ syringe and selector button bear colour coding to eliminate any setting error.



### Ordering information

Description	Packaging	Cat. No.
Stepper™ 411 incl. 3 colour coded selector buttons, adapter, Ecostep™ syringe samples	1 / pk	411.5000
Replacement adapter for red Ecostep™ syringe	5 / pk	1.411.7
Stand for one Stepper ④	1 / pk	320.411

No. of aliquots	Volume µL	Volume µL	Volume µL
73	10	50	500
49	15	75	750
36	20	100	1000
29	25	125	1250
24	30	150	1500
20	35	175	1750
18	40	200	2000
15	45	225	2250
14	50	250	2500
12	55	275	2750
11	60	300	3000
10	65	325	3250
9	70	350	3500
8	75	375	3750
8	80	400	4000
7	85	425	4250
7	90	450	4500
7	95	475	4750
6	100	500	5000

### Performance and ordering information – Ecostep™ syringes

Only three sizes cover full volume range from 10 to 5000 µL. PE/PP materials. Supplied non-sterile in bulk, or sterilized, single wrapped.

Volume	Syringe capacity	Performance at	Inaccuracy (E%)	Imprecision (CV%)	Sterilized	Packaging	Cat. No.
10 – 100 µL	0.75 mL	20 µL	< ± 1.2%	< 2.3%	no	100 / box	316.010
		100 µL	< ± 1.0%	< 0.6%	yes	100 x 1 / box	316.010.9
50 – 500 µL	3.75 mL	100 µL	< ± 1.0%	< 1.8%	no	100 / box	316.050
		500 µL	< ± 0.5%	< 0.4%	yes	100 x 1 / box	316.050.9
500 – 5000 µL	37.5 mL	1000 µL	< ± 0.8%	< 1.2%	no	100 / box	316.500
		5000 µL	< ± 0.5%	< 0.4%	yes	100 x 1 / box	316.500.9

Performance values obtained with bidest. water at constant temperature (± 0.5°C) comprised between 20 and 25°C.

# Acura<sup>®</sup> manual self-refilling microdispenser pipette



Hand-held, self-refilling microdispenser intended for repeat distribution of microliter volumes. Carefully selected materials ensure durability and resistance to aggressive media. Instrument combines easy handling of a regular micropipette with flexibility of a repeater pipette. There is no need for plastic tips or consumables, which may represent substantial savings. Three-year warranty.

## The Acura<sup>®</sup> manual 865

### Product advantages

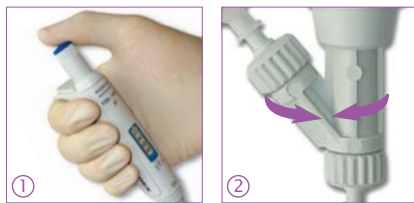
- Excellent ergonomics, soft plunger activation
- Large volume display
- Easy in-lab calibration
- No need for consumables
- Autoclavable fully assembled at 121°C / 250°F
- Versatile feeding through bottle, tubing or syringe

**865**  
5 - 50 µL  
20 - 200 µL  
100 - 1000 µL



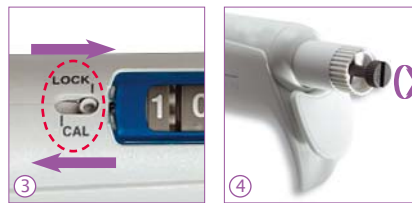
### Excellent ergonomics ①

Instrument shape and lightweight offer most convenient pipetting comfort. Smooth plunger activation drastically reduces hand fatigue.



### Convenient dispensing ②

Reliable valve system ensures high performance dispensing, dose after dose. It revolves to allow selection of the best working position.



### Swift-set calibration system\* ③ ④

Easy and precise system with integrated key and locking mechanism, making tedious procedures a thing of the past.

\* Socorex patented

### Choice of feeding sources

Supplied with a 90 cm silicone tubing, the instrument also fits optional feeding sources: ① bottle, ② vial, ③ syringe.

### Great distribution flexibility

Outlet nozzle fits any Luer Lock needles and cannulas. Optional PTFE cannula provides enhanced chemical resistance. Use 4- or 8-channel manifold when dispensing into microplates.

Needles & cannulas  
see page 27



Protective calibration  
seal sticker

## Performance and ordering information - Instruments

Including: 90 cm silicone tubing, SS blunt end cannula, female Luer inlet valve cap, Q.C. certificate and operating instructions.

Volume	Division	Inaccuracy (E%)			Imprecision (CV%)			Cat. No.
		Min. vol.	Mid. vol.	Max. vol.	Min. vol.	Mid. vol.	Max. vol.	
5-50 µL	0.1 µL	< ± 5.0%	< ± 3.5%	< ± 1.5%	< 2.0%	< 1.4%	< 0.4%	865.0050
20-200 µL	0.2 µL	< ± 2.5%	< ± 1.8%	< ± 1.0%	< 1.5%	< 1.0%	< 0.3%	865.0200
100-1000 µL	1.0 µL	< ± 1.5%	< ± 1.1%	< ± 0.6%	< 0.6%	< 0.4%	< 0.2%	865.1000

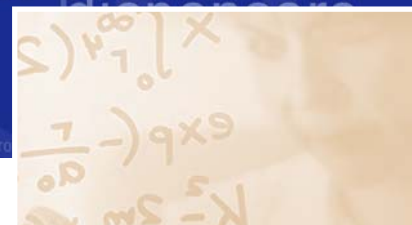
Performance values obtained with bidest. water at constant temperature (± 0.5°C) comprised between 20 and 25°C in accordance with ISO 8655.

## Ordering information - Accessories

Description	Packaging	Cat. No.
Reservoir*, 30 mL, PP, Luer	1 / pk	1.861.631
Reservoir*, 30 mL, PTFE, Luer	1 / pk	1.861.21T
Vial holder*, Luer	1 / pk	1.861.925
Inlet valve cap*, female Luer (for syringe)	1 / pk	1.861.720
PTFE delivery cannula*	1 / pk	1.861.E32
Manifold*, 4-channel, Luer Lock, stainless steel	1 / pk	1.170.054
Manifold*, 8-channel, Luer Lock, stainless steel	1 / pk	1.170.058
Work station 340 for 3 pipettes	1 / pk	320.340

\*Autoclavable

# Acurex™ compact low-profile dispensers



Compact dispensers for safe reagent handling, adapted to refrigerator storage as well as water bath heating. Dosing mechanism entirely protected inside reservoir. Manufactured and tested to fully comply with the latest regulations on instrument safety and precision. Volumes range from 0.2 to 30 mL. Two-year warranty.



## The Acurex™ compact 501

### Product advantages

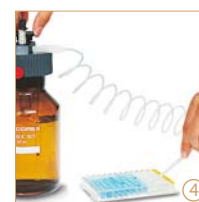
- Integrated dosing mechanism
- Simple, robust construction
- Retractable graduated column reduces instrument height
- Fluid path materials excluding any metal
- Choice of four reservoir sizes
- Fully autoclavable at 121°C / 250°F

# 501

- 0.2 – 2 mL
- 0.4 – 5 mL
- 1 – 10 mL
- 1 – 30 mL



**Chemical compatibility**  
see page 24



### Space saving low profile ①②

The graduated column is retractable for height reduction, making the dispenser ideal for storage in refrigerators.

### Glass reservoir ③

Amber glass offers optimal light protection.

### Autoclavable extension tubing ④

PTFE Jet-Pen™ and tubing help dispense into vessels with maximum comfort within a 60 cm distance. For 1- and 2-L reservoirs (Cat. No. 1.523).

### Performance and ordering information

Volume	Division	Imprecision (CV%)			Reservoir capacity	Cat. No.
		Min. vol.	Mid. vol.	Max. vol.		
0.2 – 2 mL	0.1 mL	< 0.5%	< 0.35%	< 0.1%	250 mL	501.02025
0.2 – 2 mL	0.1 mL	< 0.5%	< 0.35%	< 0.1%	1000 mL	501.021
0.2 – 2 mL	0.1 mL	< 0.5%	< 0.35%	< 0.1%	2000 mL	501.022
0.4 – 5 mL	0.2 mL	< 0.5% <sup>1)</sup>	< 0.35%	< 0.1%	500 mL	501.0505
0.4 – 5 mL	0.2 mL	< 0.5% <sup>1)</sup>	< 0.35%	< 0.1%	1000 mL	501.051
0.4 – 5 mL	0.2 mL	< 0.5% <sup>1)</sup>	< 0.35%	< 0.1%	2000 mL	501.052
1 – 10 mL	0.2 mL	< 0.5%	< 0.35%	< 0.1%	1000 mL	501.101
1 – 10 mL	0.2 mL	< 0.5%	< 0.35%	< 0.1%	2000 mL	501.102
1 – 30 mL	1.0 mL	< 0.5% <sup>2)</sup>	< 0.35%	< 0.1%	2000 mL	501.302

Performance values obtained with bidest. water at constant temperature ( $\pm 0.5^\circ\text{C}$ ) comprised between 20 and 25°C in accordance with ISO 8655. <sup>1)</sup> measured at 0.5 mL <sup>2)</sup> measured at 3 mL

### Chemically inert materials

All parts in contact with the liquid are made from chemically inert materials:

Parts	Materials
Valve	Pyrex glass and synthetic ruby
Barrel	Neutral glass
Plunger	PTFE-coated glass
Reservoir	Amber glass
Delivery jet and union	PVDF / FEP / PFA

# Calibrex™ digital bottle-top dispensers

Designed for performance handling of liquids from a large variety of bottles and flasks, the Calibrex™ dispensers combine the latest in dosing technology, high-tech materials and ergonomic design. They are manufactured and tested to fully comply with current safety regulations. Three colour-coded 520 models with adjustable volumes are ranging 0.25 – 2 mL, 1 – 5 mL and 1 – 10 mL. Fixed versions also available in any volume within these ranges. Two-year warranty.

## The Calibrex™ digital 520

### Product advantages

- Superior chemical resistance
- Long-lasting performance stability
- Simple construction – no tool for disassembling
- Instant volume setting
- In-lab calibration
- Autoclavable at 121°C / 250°F fully assembled



# 520

- 0.25 – 2 mL
- 1 – 5 mL
- 1 – 10 mL



### Friendly digital volume setting ①②

Fast and precise volume adjustment. ①② Efficient click-stop mechanism prevents unwanted alteration. Large display is easy to read; the window adjusts to desired side of instrument body. Each step on the cylindrical cam is pre-calibrated and corresponds to one division on the volume adjustment scale.

### Optimised working position ③

The instrument rotates 360° for adequate positioning on top of the bottle.

### Air filter ④

Air inlet can be enlarged to receive a membrane filter, if airborne contamination is a concern.

### In-lab calibration ⑤

Calibrex™ dispensers are factory calibrated and can be easily recalibrated by means of a dedicated adjustment screw.

### Easy maintenance ⑥

Disassembling / reassembling is facilitated by the limited number of well connected parts – no tool needed.

**Large selection of bottles**, see page 24.



**Extension tubing**, see page 23.



**Chemical compatibility**  
see page 24

Three 521 sizes expand the Calibrex™ line, dispensing volumes from 2 - 20 mL, 10 - 50 mL and 10 - 100 mL. Similar to the 520 models in many respects such as construction quality, sturdiness, chemical resistance, smooth plunger travel, in-lab calibration, autoclaving, the 521 range has a distinct black design. Also fitted with cylindrical cam and pre-calibrated steps, it includes an additional fine-tuning ring. Fixed versions available in any volume within these ranges. Two-year warranty.

### The Calibrex™ digital 521

#### Product advantages

- Superior chemical resistance
- Long-lasting performance stability
- Comfortable and convenient in use
- Solid, yet simple construction
- Instant volume setting
- In-lab calibration
- Autoclavable at 121°C / 250°F fully assembled

**521**

2 - 20 mL  
10 - 50 mL  
10 - 100 mL



#### Superior material selection

Parts	520 models	521 models
Feed tube	PTFE	
Intake valve	Ceramic	Borosilicate glass
Valve balls	Pyrex glass	Ceramic, ruby
Valve spring	Platinum-iridium	
Barrel	Borosilicate glass	
Barrel plate / base	PTFE	ETFE
Plunger	Glass with PFA coating	
Outlet valve	Ceramic	
Body	ETFE	
Delivery jet assembly	PTFE / ETFE	

Special attention is paid to component materials, providing for long instrument life. Parts coming in contact with the liquid flow are chemically inert.

#### Performance and ordering information - Calibrex™ 520 / 521

Both Calibrex™ have a 32 mm base thread. They come with three adapters (520: 28, 40, 45 mm, 521: 38, 40, 45 mm) and feed tube 300 mm (375 mm with 521.100).

Volume	Division	Inaccuracy (E%)			Imprecision (CV%)			Cat. No. Adj. volume	Cat. No. Fixed volume*
		Min. vol.	Mid. vol.	Max. vol.	Min. vol.	Mid. vol.	Max. vol.		
<b>Calibrex™ digital 520</b>									
0.25 - 2 mL	0.05 mL	< ± 3.0%	< ± 1.8%	< ± 0.6%	< 0.5%	< 0.35%	< 0.1%	520.002	520.F02
1 - 5 mL	0.1 mL	< ± 2.0%	< ± 1.3%	< ± 0.6%	< 0.5%	< 0.35%	< 0.1%	520.005	520.F05
1 - 10 mL	0.25 mL	< ± 1.5%	< ± 1.1%	< ± 0.6%	< 0.5%	< 0.35%	< 0.1%	520.010	520.F10
<b>Calibrex™ digital 521</b>									
2 - 20 mL	0.1 mL	< ± 1.5%	< ± 1.1%	< ± 0.6%	< 0.5%	< 0.35%	< 0.1%	521.020	521.F020
10 - 50 mL	1.0 mL	< ± 1.5%	< ± 1.1%	< ± 0.6%	< 0.5%	< 0.35%	< 0.1%	521.050	521.F050
10 - 100 mL	1.0 mL	< ± 1.5%	< ± 1.1%	< ± 0.6%	< 0.5%	< 0.35%	< 0.1%	521.100	521.F100



#### A true digital system ①

Cylindrical cam with pre-calibrated steps - one for each volume - contributes to the long-term calibration stability.



#### In-lab calibration ②

The Calibrex™ dispensers are factory calibrated. Recalibration easily performed by means of a dedicated adjustment screw.

#### Easy maintenance ③

Disassembling / reassembling is facilitated by the limited number of well connected parts - no tool needed.

**Chemical compatibility**  
see page 24

\* Specify desired fixed volume within instrument range when ordering.

Performance values obtained with bidest. water at constant temperature (± 0.5°C) comprised between 20 and 25°C in accordance with ISO 8655.



## Dispenser stability

Stand holds dispenser up to 50 mL, when screwed on small-size bottles.



## Bulk container aspiration

Work station facilitates liquid intake from drum or other remote container (< 10 m distance, < 2 m elevation).



## Extension tubing ①②

Autoclavable PTFE delivery Jet-Pen™ and extension tubing help dispense into vessels with maximum comfort within a 60 cm distance. Fits Calibrex™ 520 / 521 dispensers up to 20 mL.

## Feed tubing

Each Calibrex™ digital dispenser is supplied with one PTFE feed tubing. Spare feed tubings are available either cut to the standard size, or uncut by the meter. The latter is also recommended when aspirating from remote bulk containers.

## Ordering information

Description	Packaging	Cat. No.
<b>Work stations</b>		
Stand for dispensers up to 50 mL	1 / pk	320.SB050
Stand for remote liquid intake, dispensers up to 50 mL*	1 / pk	320.BC050
Stand for remote liquid intake, dispensers 100 mL*	1 / pk	320.BC100

\* Dispenser and feed tube not included, to be ordered separately.

Description	Length	Int. ø	Cat. No.
<b>Extension and replacement PTFE tubings</b>			
Extension tubing for dispensers up to 20 mL	600 mm	2.2 mm	1.524
Replacement feed tubing, 520 all sizes	300 mm	5 mm	511.707
Replacement feed tubing, 521, 20 mL	300 mm	7.5 mm	521.621
Replacement feed tubing, 521, 50 mL	300 mm	10 mm	521.622
Replacement feed tubing, 521, 100 mL	375 mm	10 mm	521.623
Feed tube by the meter, uncut, 520: 2, 5 and 10 mL	specify	5 mm	511.709
Feed tube by the meter, uncut, 521: 20 mL	specify	7.5 mm	521.705
Feed tube by the meter, uncut, 521: 50 and 100 mL	specify	10 mm	521.706

## Reagent bottles

Large selection of glass and Polyethylene reagent bottles, each supplied with one screw cap. Perfectly adapted with Calibrex™ bottle-top dispensers. Corresponding neck adapters supplied with the dispensers.

Shape	Volume	Neck, ext. ø	Cat. No.
-------	--------	--------------	----------

### Amber glass

Square	100 mL	32 mm	314.0100
Square	250 mL	32 mm	314.0250
Square	500 mL	32 mm	314.0500
Square	1000 mL	45 mm	314.1000
Round	2500 mL	45 mm	314.2500

### Amber glass, with handle

Round	2500 mL	45 mm	314.2500H
-------	---------	-------	-----------

### PE-coated Amber glass

Square	500 mL	32 mm	314.0500PE
Square	1000 mL	45 mm	314.1000PE
Round	2500 mL	45 mm	314.2500PE

### Clear Borosilicate glass

Round	250 mL	45 mm	314.0250C
Round	500 mL	45 mm	314.0500C
Round	1000 mL	45 mm	314.1000C
Round	2000 mL	45 mm	314.2000C

### Clear Pyrex glass, with connection neck

Round	500 mL	32 mm	314.0500P
-------	--------	-------	-----------

### Polyethylene

Square	250 mL	25 mm	315.0250
Square	500 mL	25 mm	315.0500
Square	1000 mL	32 mm	315.1000
Square	2500 mL	45 mm	315.2500



## Bottle-neck adapters

Both 520 and 521 models have a 32 mm base thread. They come along with three PP material bottle-neck adapters in 28, 40 and 45 mm diameters (520) or 38, 40, 45 mm diameters (521), bringing to four the number of suited bottle diameters.

Type	Ext. ø of bottle neck	Cat. No.
Threaded, PP	22, 25, 28, 30, 34, 36, 38, 40, 45 mm	GLP + ø
Threaded, PTFE	36, 38, 40, 45 mm	GLT + ø
Tapered, PP	18.8, 24, 29.2, 45 mm	NSP + ø
Tapered, PTFE	18.8, 24, 29.2 mm	NST + ø

## Dispenser chemical resistance

Reagents	Acurex		Calibrex	
	501	520	521	521
Acetic acid 100%	A	A	B/1	
Acetic acid diluted	A	A	B/3	
Acetone	A	B/4	A	
Acetonitrile	A	A	A	
Ascorbic acid	A	A	A	
Benzaldehyde	A	A	A	
Benzene	A	B/4	B/4	
Boric acid	A	A	A	
Bromine	B/2	B/2	C/2/4	
Butanol	A	A	A	
Butanone	A	B/4	A	
Carbon disulfide	A	A	A	
Chlorobenzene	A	A	A	
Chlorobutane	A	A	A	
Chloroform	A	B/4	B/4	
Chloronitric acid 100%	B/2/3	B/3	C/3	
Chlorosulphuric acid 100%	B/2/3	B/3	B/3	
Chromic acid 100%	B/2/3	B/3	B/3	
Citric acid	A	A	A	
Cyclohexane	A	A	A	
Cyclohexanone	A	A	A	
Diethylene glycol	A	A	A	
Diethylether	A	A	A	
Dimethylformamide (DMF)	A	B/4	A	
Dimethylsulfoxide (DMSO)	A	A	A	
Dioxane / Diethylene dioxide	A	A	B/4	

Reagents	Acurex		Calibrex	
	501	520	521	521
Ethanol	A	A	A	
Ether	A	B/4	B/4	
Ethyl acetate	A	A	B/4	
Ethylene glycol	A	A	A	
Formaldehyde (Formalin)	A	A	A	
Formic acid	A	A	A	
Gazoline	A	A	A	
Glycerin < 40%	A	A	A	
Heptane	A	A	A	
Hexane	A	A	A	
Hydrochloric acid 37%	B/2/3	A	B/3	
Hydrofluoric acid 100% (HF)	C/5	C/5	C/5	
Hydrogen peroxide	A	A	A	
Iodine	A	A	A	
Isopropanol	A	A	A	
Lactic acid	A	A	A	
Liquid ammonia	A	A	A	
Methanol	A	A	A	
Methylchloride	A	A	A	
Methylen chloride (DCM)	A	B/2/4	B/2/4	
Methyl ethyl ketone MEK	A	B/4	A	
Methylmethacrylate (MMA)	A	A	A	
Mineral oil	A	A	A	
Nitric acid 100%	B/2/3	B/3	C/3	
Octane	A	A	A	
Oil, veg. / anim. / min.	A	A	A	

Reagents	Acurex		Calibrex	
	501	520	521	521
Nitric acid dil. < 30%	A	A	A	
Oxalic acid	A	A	A	
Perchloric acid 100%	B/2/3	B/3	B/3	
Perchloric acid diluted	A	A	A	
Petrol benzene	A	A	B/4	
Petroleum ether / spirit	A	A	B/4	
Phenol	A	A	A	
Phosphoric acid 100%	A	A	A	
Potassium chloride	B/1	A	A	
Potassium hydroxide	B/1	B/1	B/1	
Potassium permanganate	A	A	A	
Propionic acid	A	A	A	
Sodium acetate	A	A	A	
Sodium chloride / cooking salt	B/1	A	A	
Sodium hydroxide	B/1	B/1	B/1	
Sodium hypochloride	A	A	A	
Sulfochromic acid 100%	B/2/3	B/2/3	B/2/3	
Sulfuric acid 100%	B/2/3	B/2	B/2	
Sulfonitric acid 100%	B/2/3	B/2/3	B/2/3	
Terebentine oil	A	A	B/4	
Tetrahydrofurane THF	B/2/4	B/2/4	B/2/4	
Toluene	A	B/4	B/4	
Trichlorethylene	B/4	B/4	B/4	
Trichloroacetic acid	A	A	A	
Trichloroethane / methane	B/4	B/4	B/4	
Trichloro trifluoro ethane	B/4	B/4	B/4	
Xylene	A	B/4	B/4	

A = Good resistance  
B = Acceptable with limitations  
C = Not recommended

- 1 = Possible crystallisation - blockage (do not let dry plunger / barrel together).
- 2 = Swell of plunger protection layer, possible peeling.
- 3 = Acid vapours (better resistance with lower concentration).  
Do not leave instrument on bottle.
- 4 = Risk of softening or discoloration of external parts through vapours.  
Do not leave instrument on bottle.
- 5 = Chemical degradation of glass parts (plunger / barrel).

Contact Socorex about other chemicals.

# Dosys™ laboratory syringes



From the basic unit to the corrosion-resistant model, the laboratory dedicated syringe line offers precision instruments you can trust. Intended for safe and reliable liquid distribution, the selection of pistol-grip and two-ring instruments comes in a wide volume range. One-year warranty.

## The Dosys™ syringes

### Product advantages

- Optimal hand balance and ergonomics
- Fast and reliable volume setting
- Excellent reproducibility
- Plunger tightness without O-ring
- High chemical resistance
- Fully autoclavable at 121°C / 250°F



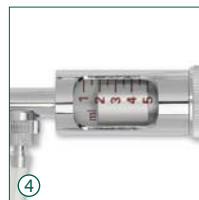
162  
163  
164



172  
173  
174

Two-ring handle

Pistol-grip handle



### Simple, natural movements ① ②

Both pistol-grip and two-ring handles fit any hand in a comfortable way. Activation performed with limited effort for efficient work even during long dispensing series.

### Syringe stand

Stand holds syringe in ready-to-fetch position. Easy-to-clean material. Autoclavable. (Cat. No. 320.170).



### Volume selection - Reliable reproducibility ③

Volume is set within seconds. It will not vary while activating the syringe, thanks to the safety-locking nut on the micrometric screw. Dose-by-dose reproducibility (CV) is excellent, as witnessed by performance figures.

### Plunger tightness without O-ring ④

Smooth plunger travel and tightness achieved through high-precision stainless steel plunger and grounded glass barrel. No O-ring to mess with or replace.

### Glass protection ⑤

Interchangeable glass barrel is protected by a PVC sleeve (not autoclavable) to prevent breakage.

### Few parts assembly - Low maintenance ⑥

The automatic syringes are made of only six main parts, easy to disassemble. Fast access to all elements allows rapid and efficient cleaning. Spares are available at reasonable cost.

## Dosys™ laboratory syringes - Unlimited applications



Dose-by-dose distribution



Dispensing distribution



Sterile work



Filtration at your nozzle tip



Aspiration with reverse modus valve



Animal injection

## Instrument descriptions and ordering information

Corrosion resistant

### Dosys™ basic syringes 162 / 172

- Fill-by-fill (automatic) through needle or cannula
- Supplied without valve system
- Luer Lock nozzle

Package includes syringe, PVC protection sleeve and operating instructions.



Volume	Division	Dosys 162 Cat. No.	Dosys 172 Cat. No.
0.1 - 1 mL	0.05 mL	162.0501	172.0501
0.3 - 2 mL	0.1 mL	162.0502	172.0502
0.5 - 5 mL	0.5 mL	162.0505	172.0505
1 - 10 mL	1.0 mL		172.0510

### Dosys™ classic syringes 163 / 173

- Self-refilling automatic
- Integrated valve system
- Luer Lock nozzle

Package includes syringe, one meter silicone feed tube, sinker, PVC protection sleeve, aspiration and vent cannulas, set of spares for valve, operating instructions.



Volume	Division	Dosys 163 Cat. No.	Dosys 173 Cat. No.
0.025 - 0.3 mL	0.025 mL	163.05003	173.05003
0.1 - 0.5 mL	0.1 mL	163.05005	173.05005
0.1 - 1 mL	0.05 mL	163.0501	173.0501
0.3 - 2 mL	0.1 mL	163.0502	173.0502
0.5 - 5 mL	0.5 mL	163.0505	173.0505
1 - 10 mL	1 mL	163.0510	173.0510
5 - 20 mL	1 mL		173.0520

### Dosys™ premium syringes 164 / 174

- Self-refilling automatic
- Detachable valve system
- Enhanced corrosion resistance
- Luer Lock nozzle

Package includes syringe, one meter silicone feed tube, sinker, PVC protection sleeve, aspiration, vent and dosing cannulas, set of spares for valve, operating instructions.



Volume	Division	Dosys 164 Cat. No.	Dosys 174 Cat. No.
0.1 - 1 mL	0.05 mL	164.0501	174.0501
0.3 - 2 mL	0.1 mL	164.0502	174.0502
0.5 - 5 mL	0.5 mL	164.0505	174.0505
1 - 10 mL	1.0 mL	164.0510	174.0510

## Performance all models

Volume	Imprecision (CV%)		
	Min. vol.	Mid. vol.	Max. vol.
0.025 - 0.3 mL	< 1.8% <sup>1)</sup>	< 1.2%	< 0.5%
0.1 - 0.5 mL	< 1.2%	< 0.9%	< 0.4%
0.1 - 1 mL	< 0.7%	< 0.6%	< 0.4%
0.3 - 2 mL	< 0.6%	< 0.5%	< 0.4%
0.5 - 5 mL	< 0.5%	< 0.4%	< 0.2%
1 - 10 mL	< 0.5%	< 0.4%	< 0.2%
5 - 20 mL	< 0.5%	< 0.4%	< 0.4%

Tests performed with bidist. water, using stainless steel cannula (1.2x50 mm), at constant working speed. <sup>1)</sup> Measured at 0.075 mL

## Liquid path materials (for chemical resistance)

Parts	Basic / classic models	Premium models
Feed tubing	Silicone	Silicone
Barrel	Borosilicate glass	Borosilicate glass
Washer, barrel	FPM	FPM
Plunger	Stainless steel DIN 304	Stainless steel DIN 316L
Valve system	Ni-Cr Brass	Stainless steel DIN 316L
Washer, valve	PTFE	PTFE
Spring and balls, valve	Stainless steel, DIN 304	Stainless steel, DIN 304
Sinker, feed cannula	Ni-Cr Brass	Ni-Cr Brass

## Accessories for self-refilling syringes



### Alternative feed sources ①②

Optional vial holder conversion set and reagent reservoirs for additional liquid feeding possibilities.

Description	Packaging	Cat. No.
Vial holder conversion set for 163 and 173 models (except 20 mL), without vial	1 / pk	1.187.1C
PP bottle, 60 mL	1 / pk	1.187.060*
PP bottle, 125 mL	1 / pk	1.187.150*
PP bottle, 250 mL	1 / pk	1.187.250*

\*Use with Rotlauf inlet valve (Cat. No. 187.613) only, to be ordered separately.



### Enhanced tightness set ③

The special clear glass barrel / X-ring fitted plunger enhance tightness when demanded by application (ex. filtration, aspiration, etc.)

Description	Packaging	Cat. No.
Set includes one each plunger, X-ring, 5 mL barrel and grease	1 / pk	1.170.205
Spare barrel for tightness set, 5 mL	6 / pk	0187.05T



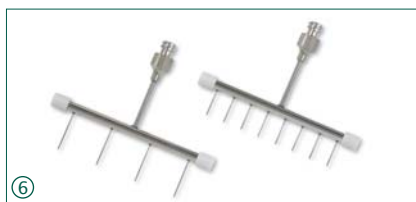
### Aspiration valve ④⑤

Reverse modus valve set for liquid aspiration (ex. waste collection in separate container). Vented waste collector cap and enhanced tightness set recommended.

Description	Packaging	Cat. No.
Reverse modus aspiration valve unit for 164 / 174 models	1 / pk	1.170.952
Screw cap ø 45 mm, with tubing connection and filtered air outlet	1 / pk	1.170.945

### Multiple dispensing manifolds ⑥

For convenient distribution in 24- and 96-well plates. Tight-fitting Luer and Luer Lock syringe nozzles. Stainless steel with PTFE stoppers, autoclavable.



Description	Packaging	Cat. No.
4-channel manifold	1 / pk	1.170.054
8-channel manifold	1 / pk	1.170.058

### Injection needles ⑦

Beveled, high-quality needles, stainless steel, autoclavable. 12 / pack.

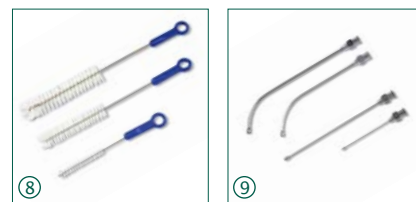


ø x L, mm	Cat. No.	ø x L, mm	Cat. No.
0.8 x 10	371.0810	1.4 x 35	371.1435
0.8 x 25	371.0825	1.6 x 20	371.1620
0.8 x 30	371.0830	1.6 x 25	371.1625
0.8 x 40	371.0840	1.6 x 30	371.1630
1.0 x 10	371.1010	1.6 x 100	371.16100
1.0 x 20	371.1020	1.8 x 10	371.1810
1.0 x 30	371.1030	1.8 x 20	371.1820
1.0 x 40	371.1040	1.8 x 30	371.1830
1.2 x 10	371.1210	2.0 x 30	371.2030
1.2 x 20	371.1220	2.0 x 40	371.2040
1.2 x 35	371.1235	2.0 x 50	371.2050
1.2 x 50	371.1250		
1.4 x 20	371.1420		

Additional sizes available

### Cleaning brushes ⑧

Heavy-duty nylon brushes with tufted end and plastic handle for barrel cleaning.



Description	Packaging	Cat. No.
For 0.3, 0.5, 1 mL barrels	6 / pk	1.170.301
For 1, 2, 5 mL barrels	6 / pk	1.170.305
For 5, 10, 20 mL barrels	3 / pk	1.170.320
Set of 6 nylon brushes, 2 each	6 / pk	1.170.300

### Dispensing cannulas

Blunt end superior cannulas, stainless steel, autoclavable.

Size (ø x L)	Packaging	Cat. No.
0.8 x 40 mm	12 / pk	370.0840
1.2 x 10 mm	1 / pk	371.1210UN
1.2 x 50 mm	1 / pk	370.1250
1.6 x 20 mm	1 / pk	371.1620UN
2.0 x 30 mm	1 / pk	371.2030UN
2.2 x 100 mm	1 / pk	370.22100
2.2 x 150 mm	1 / pk	370.22150

### Drenchers ⑨

For safe animal mouth- and nose-feeding. Stainless steel, autoclavable.

Size (ø x L)	Packaging	Cat. No.
<b>Drenchers, straight</b>		
0.9 x 25 mm	3 / pk	376.0925S
1.2 x 51 mm	3 / pk	376.1251S
1.6 x 102 mm	2 / pk	376.16102S
3.0 x 203 mm	2 / pk	376.30203S
<b>Drenchers, bent</b>		
0.9 x 25 mm	3 / pk	376.0925B
1.2 x 51 mm	3 / pk	376.1251B
1.6 x 102 mm	2 / pk	376.16102B
3.0 x 203 mm	2 / pk	376.30203B

## Spare parts for self-refilling syringes



### Grounded glass barrels ①

Description	Packaging	Cat. No.
Barrel, syringe 0.3 mL	6 / pk	0187.003
Barrel, syringe 0.5 mL	6 / pk	0187.005
Barrel, syringe 1 mL	6 / pk	0187.01
Barrel, syringe 2 mL	6 / pk	0187.02
Barrel, syringe 5 mL	6 / pk	0187.05
Barrel, syringe 10 mL	6 / pk	0187.10
Barrel, syringe 20 mL	3 / pk	0187.20

### Spare bags ③

Description	Packaging	Cat. No.
Kit for valve, syringe 0.3 mL	1 bag	1.187.72003
Kit for valve, syringe 0.5 mL	1 bag	1.187.72005
Kit for valve, syringe 1 mL	1 bag	1.187.7201
Kit for valve, syringe 2 mL	1 bag	1.187.7202
Kit for valve, syringe 5 mL	1 bag	1.187.7205
Kit for valve, syringe 10 mL	1 bag	1.187.7210
Kit for valve, syringe 20 mL	1 bag	1.187.7220

Includes springs, balls, washer for valve and barrel washer.

### Vent and feed cannulas ⑤

Description	Packaging	Cat. No.
<b>Short vent cannulas</b>		
Plastic / SS, syringes 0.3 to 5mL	1 / pk	187.933
Chrome plated, syringe 10 mL	1 / pk	187.591
Chrome plated, syringe 20 mL	1 / pk	187.593

### Long feed cannulas

Chrome plated, syringes 0.3 to 10 mL	1 / pk	187.592
Chrome plated, syringe 20 mL	1 / pk	187.594

### PVC protection sleeves ②

Description	Packaging	Cat. No.
Sleeve, 0.3, 0.5 mL barrels	6 / pk	1.170.4005
Sleeve, 1 mL barrels	6 / pk	1.170.401
Sleeve, 2 mL barrels	6 / pk	1.170.402
Sleeve, 5 mL barrels	6 / pk	1.170.405
Sleeve, 10 mL barrels	6 / pk	1.170.410
Sleeve, 20 mL barrels	3 / pk	1.170.420

### Feed tubing (medical quality silicone) ④

Description	Packaging	Cat. No.
Tube, syringes 0.3 to 10 mL, cut	1 m / pk	187.705
Tube, syringes 0.3 to 10 mL, cut	3x 1 m / pk	187.905
Tube, syringes 0.3 to 10 mL, uncut	10 m / pk	187.910
Tube, syringes 0.3 to 10 mL, cut	by the meter	187.710
Tube, syringe 20 mL, cut	1 m / pk	187.707

### Other spare parts

Refer to separate list for exhaustive selection.

## The Dosys™ all-glass syringes

The reusable borosilicate glass syringes offer superior chemical and heat-shock resistance. A precious, low-cost alternative to disposable plastic syringes, complementing the self-refilling models in many applications.

### Product advantages

- Precision-machined plunger and barrel
- Excellent fitting and tightness
- Permanent, high-visibility graduations
- Sterilisation up to 160°C / 320°F

### Ordering information

Volume	Division	Packaging	Glass Luer nozzle Cat. No.	Metal Luer Lock nozzle Cat. No.
0.1 - 1 mL	0.05 mL	3 / pk	155.0301	155.0501
0.5 - 2 mL	0.1 mL	3 / pk		155.0502
0.2 - 5 mL	0.2 mL	3 / pk	155.0305	155.0505
1 - 10 mL	0.2 mL	3 / pk	155.0310	155.0510
1 - 20 mL	1 mL	2 / pk	155.0320	155.0520
1 - 30 mL	2 mL	2 / pk	155.0330	155.0530
1 - 50 mL	2 mL	1 / pk		155.0550
10 - 100 mL	10 mL	1 / pk	155.03100	155.05100
10 - 150 mL	10 mL	1 / pk		155.05150
10 - 200 mL	10 mL	1 / pk		155.05200
10 - 250 mL	10 mL	1 / pk		155.05250

155

1 to 250 mL



# Profiller™ *electro* electronic pipette controller



Pipette controller fitting any hand in a very comfortable way. Shape is ideal for working with glass or plastic pipettes within laminar flow or microbiological safety cabinet. A powerful, yet quiet motor and a switch to set both aspiration and dispensing speeds enable maximal working efficiency even with large pipetting volumes. One-year warranty.

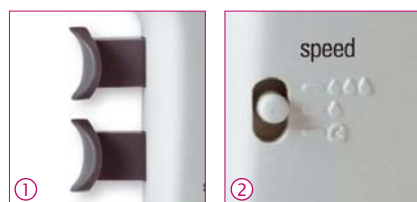
## The Profiller™ *electro* 446

### Product advantages

- Powerful pump – fills 25 mL in 3 seconds
- Simple, fast operation
- Comfortable finger triggers
- Low battery light
- NiMH battery rechargeable during use
- Interchangeable protection membrane filter
- Stand suitable for bench or wall mounting

### Finger triggers ①

Suction and dispensing are controlled through two ergonomically positioned finger triggers. They provide a comfortable grip with minimum activation effort.



### Variable speed ②

Switch enables selection of fast or slow aspiration and dispensing (with blow-out). Fast speed filling up to 25 mL in under 3 seconds. Gravity dispense mode is designed for use with 'To Deliver' (TD) pipettes.



### Battery charge ③

Instrument plug enables charging battery either in storage position or during use.

# 446

Pipettes  
up to 100 mL



### Convenient stand

Suitable for bench or wall mounting, stand houses Profiller™ *electro* with or without a pipette in place.



### Ordering information - Instrument

Supplied with power supply, two spare hydrophobic filters (0.45µm and 0.2µm), bench / wall stand and instruction manual.

Profiller™ <i>electro</i> 446	Packaging	Cat. No.
With Europe style plug	1 / pk	446.100E
With UK style plug	1 / pk	446.100G
With USA/Japan style plug	1 / pk	446.100U
With Australia/ New Zealand style plug	1 / pk	446.100A

### Ordering information - Accessories

Description	Packaging	Cat. No.
Spare stand	1 / pk	320.446
Spare 1.2V NiMH battery	2 / pk	900.916
Power supply, Australian New Zealand style plug	1 / pk	900.946A
Power supply, Europe style plug	1 / pk	900.946E
Power supply, UK style plug	1 / pk	900.946G
Power supply, USA-Japan style plug	1 / pk	900.946U

Description	Packaging	Cat. No.
Membrane filter, 0.45µm	5 / pk	322.435
Membrane filter, 0.2µm	5 / pk	322.400
Silicone pipette holder	1 / pk	1.435.01
Nose cone - white	3 / pk	1.435.02
Alternative nose cones pink, violet, green (1 each)	3 / pk	1.435.03

Robust and easy to use, both models offer ergonomic shape and light weight. They provide smooth control in both aspirating and dispensing, using glass or plastic pipettes of volume up to 100 mL. One-year warranty.

## 435

Pipettes  
up to 100 mL

### The Profiller™ manual 435 / 436

#### Product advantages

- Large capacity bulb
- Soft action lever button
- Efficient blow-out system
- PTFE protection membrane filter
- Maintenance free
- Alternative colour-coded nose cones



## 436

Pipettes  
up to 100 mL



#### Protection filter ①

Interchangeable hydrophobic membrane filter guarantees effective protection against airborne contamination during aspiration and dispensing.

#### Colour coding cones ②

Nose cone can be changed for individual, laboratory or department identification. Choose among regular white or a bunch of three colours.

#### Pipette holder

Conical shape of silicone pipette holder tightly fits graduated glass or plastic pipettes. Autoclavable.

#### Squeezable bulb ③ ④

Simply squeeze large capacity silicone bulb for efficient aspiration. If additional aspiration is needed, it can be squeezed even during pipetting. 436 model has a distinct flat-shaped bulb.

#### Precise control ⑤

Thumb lever button for left- and right-handed users to easily control both aspiration and dispensing speeds.

#### Liquid blow-out ⑥

Press large button to expel residual liquid when using blow-out type pipettes.

#### Ordering information - Instruments

Description	Packaging	Cat. No.
Profiller™ manual 435, egg style grey bulb	1 / pk	435.100
Profiller™ manual 436, flat shaped blue bulb	1 / pk	436.100

#### Ordering information - Accessories

Description	Packaging	Cat. No.
PTFE membrane filter, 0.45 µm	5 / pk	322.435
PTFE membrane filter, 0.2 µm	5 / pk	322.400
Spare silicone pipette holder	1 / pk	1.435.01
Repl. nose cone - white	3 / pk	1.435.02
Alternative nose cones - pink, violet, green (1 each)	3 / pk	1.435.03

Low-cost, easy-to-use pipette fillers suitable for graduated glass and plastic pipettes. Rotate wheel to aspirate. Fast release by pressing air inlet valve button, or gradual release by gently turning wheel.

Assorted package includes one each size.

## 406

2 mL  
10 mL  
25 mL



### The Profillette™ 406

#### Product advantages

- One-hand operation
- Easy filling and dispensing
- Air inlet valve for fast distribution
- Colour coding per size
- Maintenance free

#### Ordering information - Instruments

Volume	Colours	Packaging	Cat. No.
2 mL	blue	1 / pk	406.002
10 mL	green	1 / pk	406.010
25 mL	red	1 / pk	406.025
2 / 10 / 25 mL	assorted	3 / pk	406.300

#### Ordering information - Accessories

Description	Packaging	Cat. No.
Spare silicone pipette holder	1 / pk	1.406.01
Repl. nose screw	1 / pk	1.406.02



337

### 7-position work station

Space-saving pipette stand holds up to seven single-channel pipettes of most brands. Made of sturdy polyamid material, easy to clean. Anti-slip pads guarantee bench stability.

### Attractive pastel colours



### Universality ① ②

One for all, the work station fits new and old generations of Socorex® and other brand pipettes.

### Ordering information

Colour	Packaging	Cat. No.
<b>Universal 7 pipette work station 337</b>		
Light grey	1 / pk	320.337C
Pastel rose	1 / pk	320.337R
Ice blue	1 / pk	320.337B
Mint green	1 / pk	320.337M
Vanilla yellow	1 / pk	320.337Y

332



### Shelf pipette holder 332 for 2 instruments ③

Fitting two micro, macro and/or multichannel pipettes, the attractive design accommodates all Acura® and Calibra® instruments. The self-adhesive strip supplied ensures lasting attachment on any surface. Made of polycarbonate material.

### Ordering information

Colour	Packaging	Cat. No.
<b>Shelf pipette holder 332</b>		
Transparent blue	1 / pk	320.332
	4 / pk	320.332.4

340



### 3-position multi- and single-channel pipette work station

Innovative design fits all Calibra® and Acura® models. Easy reach of each instrument. Heavy bottom plate and anti-slip pads guarantee high stability. Made of polyamid material.

### Extended compatibility ④ ⑤

Work station 340 also fits the Acura® 810 dilution pipette and Acura® 865 microdispenser pipettes.

### Ordering information

Colour	Packaging	Cat. No.
<b>3 pipette work station 340</b>		
Light grey	1 / pk	320.340

# Qualitips® pipette tips



A perfect match between micropipettes and tips guarantees trouble-free pipetting and reliable results. The Socorex Qualitips® are designed to fulfil above preconditions. The line is exclusively made from high grade, virgin, metal-free polypropylene. Precision injection moulding care for air-tight fit. Stringent quality procedures ensure lot by lot consistency. Various shapes in a range from 10 µL to 10 mL.

## The Qualitips® pipette tips from 10 µL to 10 mL

### Product advantages

- Wide selection, superior quality
- Lot-by-lot consistency
- Bulk or rack availability
- Compatibility with various pipette brands
- High-density filter prevents aerosol contamination
- DNase and RNase-free filter tips
- Pyrogen-free sterilized filter tips



Ask for free samples

### Qualitips 10 µL

Size
 31.0 mm
 31.0 mm
 42.3 mm
 45.6 mm
 70.9 mm

### Qualitips 20 µL

Size
 51.0 mm
 69.0 mm

### Qualitips 100 µL

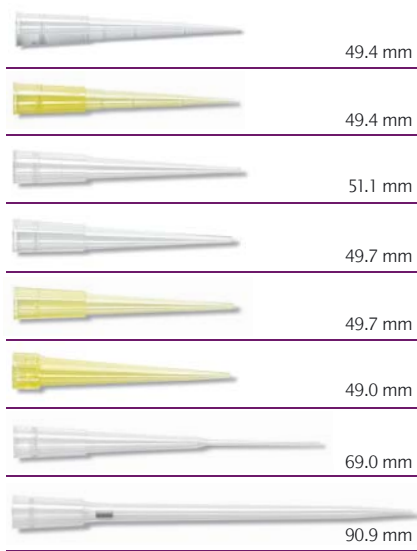
Size
 54.1 mm
 69.0 mm

Description							Packaging		Cat. No.
Tip also fits	Capacity	Colour	Style	Filter	Sterilized	Unit	Quantity		
BT, E, G	10 µL	Natural	Ultra-micro	No	No	Bag	1000	309.0010B	
BT, E, G	10 µL	Natural	Ultra-micro	No	No	Rack	10 x 96	309.0010R	
B, BT, E, F, G	10 µL	Natural	Ultra-micro	Yes	Yes	Rack	10 x 96	309.0010FR	
B, BT, E	10 µL	Natural	Micro	No	No	Bag	1000	302.0020B	
B, BT, E	10 µL	Natural	Micro	No	No	Rack	10 x 96	302.0020R	
B, E, F	10 µL	Natural	Micro	Yes	Yes	Rack	10 x 100	302.0010FR	
B, E, F	10 µL	Natural	Micro	Yes	No	Bag	1000	302.0010AFB	
B, E, F	10 µL	Natural	Gel loading	No	No	Rack	4 x 204	302.0010GR	

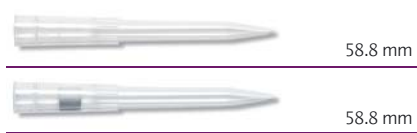
Description							Packaging		Cat. No.
Tip also fits	Capacity	Colour	Style	Filter	Sterilized	Unit	Quantity		
B, BT, E, F, G	20 µL	Natural	Regular	Yes	Yes	Bag, single wrapped	5 x 100	308.0020FS	
B, BT, E, F, G	20 µL	Natural	Regular	Yes	Yes	Rack	10 x 96	308.0020FR	
B, BT, E, F, G	20 µL	Natural	Gel loading	Yes	Yes	Rack	4 x 204	308.0020GFR	

Description							Packaging		Cat. No.
Tip also fits	Capacity	Colour	Style	Filter	Sterilized	Unit	Quantity		
B, BT, E, F, G	100 µL	Natural	Regular	Yes	Yes	Rack	10 x 96	308.0100FR	
B, BT, E, F, G	100 µL	Natural	Gel loading	Yes	Yes	Rack	4 x 204	308.0100GFR	

**Qualitips 200 µL** Size



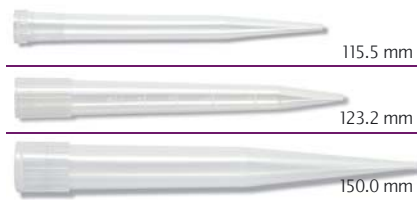
**Qualitips 300 / 350 µL** Size



**Qualitips 1000 µL** Size



**Qualitips 2 / 5 / 10 mL** Size



Description							Packaging		Cat. No.
Tip also fits	Capacity	Colour	Style	Filter	Sterilized	Unit	Quantity		
B, BT, E, F, G	200 µL	Natural	Graduated	No	No	Bag	2 x 500	307.0200B	
B, BT, E, F, G	200 µL	Natural	Graduated	No	No	Rack <sup>1)</sup>	10 x 96	307.0200R	
B, BT, E, F, G	200 µL	Yellow	Graduated	No	No	Bag	2 x 500	327.0200B	
B, BT, E, F, G	200 µL	Yellow	Graduated	No	No	Rack <sup>1)</sup>	10 x 96	327.0200R	
B, BT, E, F	200 µL	Natural	Regular	No	No	Bag	1000	308.0200B	
B, BT, E, F	200 µL	Natural	Regular	No	No	Rack	10 x 96	308.0200R	
B, BT, E, F, G	200 µL	Natural	Regular	No	No	Bag	2 x 500	309.0200B	
B, BT, E, F, G	200 µL	Natural	Regular	No	No	Rack	10 x 96	309.0200R	
B, BT, E, F, G	200 µL	Yellow	Regular	No	No	Bag	2 x 500	329.0200B	
B, BT, E, F, G	200 µL	Yellow	Regular	No	No	Rack	10 x 96	329.0200R	
B, E	200 µL	Yellow	Regular	No	No	Bag	2 x 500	328.0200B	
B, E	200 µL	Yellow	Regular	No	No	Rack	10 x 96	328.0200R	
B, BT, E, F, G	200 µL	Natural	Gel loading	No	No	Rack	4 x 204	308.0200GR	
B, BT, E, F, G	200 µL	Natural	Extended	Yes	Yes	Bag, single wrapped	5 x 100	308.0200LFS	
B, BT, E, F, G	200 µL	Natural	Extended	Yes	Yes	Rack	8 x 204	308.0200LFR	

Description							Packaging		Cat. No.
Tip also fits	Capacity	Colour	Style	Filter	Sterilized	Unit	Quantity		
B, BT, E, G	350 µL	Natural	Regular	No	No	Bag	1000	308.0350B	
B, BT, E, G	350 µL	Natural	Regular	No	No	Rack	10 x 96	308.0350R	
B, BT, E, G	300 µL	Natural	Regular	Yes	Yes	Rack	10 x 96	308.0300FR	
B, BT, E, G	300 µL	Natural	Regular	Yes	No	Bag	1000	308.0300AFB	

Description							Packaging		Cat. No.
Tip also fits	Capacity	Colour	Style	Filter	Sterilized	Unit	Quantity		
B, BT, E, F, G	1000 µL	Natural	Graduated	No	No	Bag	4 x 250	307.1000B	
B, BT, E, F, G	1000 µL	Natural	Graduated	No	No	Rack <sup>1)</sup>	10 x 60	307.1000R	
B, BT, E, F, G	1000 µL	Natural	Regular	No	No	Bag	4 x 250	309.1000B	
B, BT, E, F, G	1000 µL	Natural	Regular	No	No	Rack	8 x 60	309.1000R	
B, BT, E, F, G	1000 µL	Blue	Regular	No	No	Bag	4 x 250	319.1000B	
B, BT, E, F, G	1000 µL	Blue	Regular	No	No	Rack	8 x 60	319.1000R	
B, BT, E, F	1000 µL	Blue	Regular	No	No	Bag	4 x 250	318.1000B	
B, BT, E, F	1000 µL	Blue	Regular	No	No	Rack	8 x 60	318.1000R	
B, BT, E, F	1000 µL	Natural	Regular	Yes	Yes	Rack	10 x 100	309.1000FR	
B, BT, E, F, G	1000 µL	Natural	Regular	Yes	No	Bag	1000	309.1000AFB	

<sup>1)</sup> hinged lid

Description							Packaging		Cat. No.
Tip also fits	Capacity	Colour	Style	Filter	Sterilized	Unit	Quantity		
E	2 mL	Natural	Regular	No	No	Bag	2 x 250	312.02	
G	5 mL	Natural	Graduated	No	No	Bag	2 x 250	312.05B	
G	5 mL	Natural	Graduated	No	No	Rack	2 x 50	312.05R	
F	10 mL	Natural	Regular	No	No	Bag	3 x 100	312.10	

Tip fitting: B = Brand®, BT = Biohit®, E = Eppendorf®, F = Finnpipette®, G = Gilson®. Brand names belong to their respective owners.





**Straw tips ①**

Long shape allows pick-up of particle containing liquids in Stomacher® bags and narrow reservoirs without blocking. Supplied sterilized in re-sealable bags.



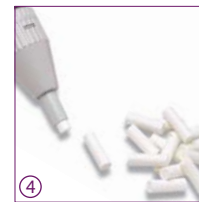
**Glass Pasteur pipette ②**

Fits Acura® manual 835, Acura® electro 936 and Calibra® digital 832 macropipettes with corresponding adapter. Long and thin alternative (150 x 7 mm) to PP macrotips.



**Nozzle filters for pipettes ③④**

Protection against liquid overflow or pipette contamination. Filters are interchangeable, non sterile, non autoclavable.



**Ordering information**

Description	Fits	Material	Size (lxØ mm)	Packaging	Cat. No.
Straw tips, 1.1 mL	Acura® manual 810	PP, sterilized	190 x 4	40x 25/ pk	313.1119.40
Straw tips, 2.2 mL	Acura® manual 810	PP, sterilized	240 x 4	40x 25/ pk	313.2224.40
Straw tip, 5 mL	Acura® manual 835, 2 and 5 mL*	PP, sterilized	180 x 6.5	30x 10/ pk	313.5018.30
Pasteur Pipette, 2 mL	Acura® manual 835, 2 and 5 mL* Acura® electro 935, 5 mL*	Glass	150 x 7	250/ pk	313.02
Nozzle filter	Acura® manual 810	PE	6.3 x 2.5	100/ pack	322.810
Nozzle filter	Calibra® digital 832, 2 mL	Cellulose	22 x 7	250/ bag	322.02
Nozzle filter	Acura® manual 835, 2 and 5 mL Acura® electro 935, 5 mL	PP fibre	20 x 7.5	250/ bag	322.05
Nozzle filter	Calibra® digital 832, 10 mL Acura® electro 935, 10 mL	PP fibre	30 x 10.5	100/ bag	322.10

\* only when using suitable adapters



**Autoclaving boxes for Qualitips® ⑤**

Empty boxes for autoclaving tips supplied in bags.



**All purpose reagent reservoirs ⑥**

Particularly well suited for single and multichannel pipetting. Various shape, material and capacity provides ideal solutions for many applications.

**Ordering information**

Description	Fitting	Lid	Packaging	Cat. No.
Autoclaving box	10 µL tips #309.0010B	hinged	10 / pk	309.0010ER
Autoclaving box	10 µL tips #302.0020B	yes	10 / pk	302.0020ER
Autoclaving box	200 µL tips #328.0200B	yes	10 / pk	328.0200ER
Autoclaving box	350 µL tips #308.0350B	yes	10 / pk	308.0350ER
Autoclaving box	1000 µL tips #319.1000B	yes	8 / pk	319.1000ER
Autoclaving box	10 mL tips #312.10	hinged	4 / pk	312.10ER

Description	Size	Volume	Colour	Style	Lid	Materials	Sterilized	Volume	Volume
Reservoir	58x132x25 mm	70 mL	Natural	V-shaped	No	PP	No	20/ pack	330.01
Reservoir	83x121x34 mm	125 mL	Natural	V-shaped	Hinged lid	PP	No	20/ pack	330.01L
Reservoir	83x126x13 mm	48 mL	White	8-channel	No	PS	Yes	10x 1/ pack	330.08.9
Reservoir	83x126x13 mm	48 mL	White	12-channel	No	PS	Yes	10x 1/ pack	330.12.9

# Socorex Service Center service programme

Socorex instruments are built to last. In order to guarantee trouble-free usage over time, a minimum maintenance and regular calibration are strongly recommended. From basic repair to GLP requirements, the Socorex Service Center – in its ultra-modern facilities – provides fast and reliable service and calibration, based on long-term experience in manufacturing precision liquid handling instruments.



## Advantages

- Know-how and high competence
- All brand service for pipettes and dispensers
- Broad programme
- Controls according to ISO 8655 and ISO 17025 standards
- SAS accredited QC laboratory



## Broad calibration programme

Whatever the maintenance level needed for micropipettes and dispensers, Socorex has the appropriate answer, including customised service plans when required.

## Efficient handling

The lead time for instruments received at Socorex is three to five working day, or 48 hours using our “Express service”.

## Service Center on the web

For more details about our service programme, check: [www.socorex.com](http://www.socorex.com)



## Personalised technical support

Highly qualified personnel with a broad product knowledge is at disposal for all technical matters. The team also provides professional answers and solutions about handling, maintenance and control procedures.

## SCS laboratory

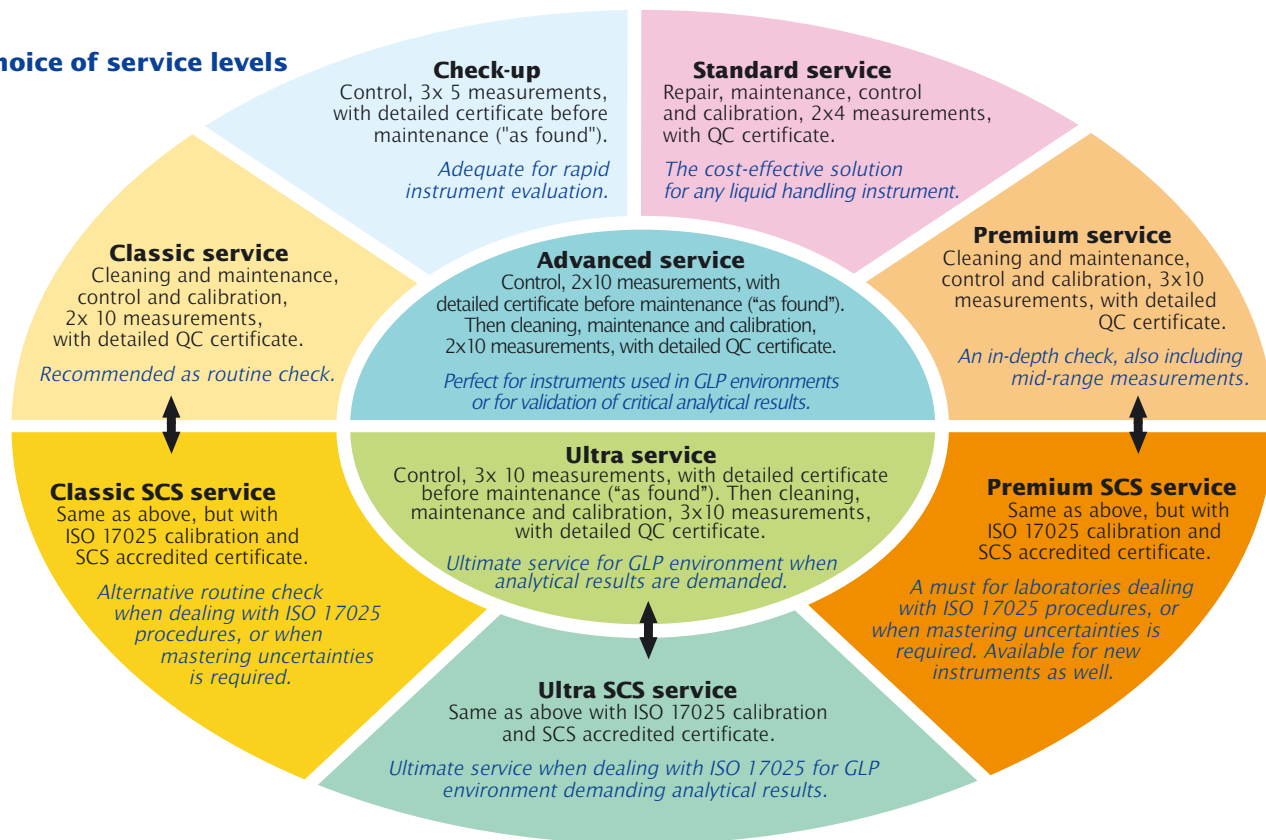
Accredited by SAS (Swiss Accreditation Services) of the Federal Office of Metrology, the Socorex QC laboratory performs calibrations in full compliance with ISO 17025 and delivers control certificates recognised internationally by ILAC members.

## Examples of ILAC members from signatory countries

Country	Organisation
Australia	NATA
Austria	BMWA
Belgium	BELAC
Brazil	CGCRE / INMETRO
Canada	SCC-CLAS
China	CNAS
China HK	HKAS
Croatia	HAA
Czech Republic	CAI
Denmark	DANAK
Finland	FINAS
France	COFRAC
Germany	DKD
Hungary	NAT
India	NABL
Indonesia	KAN
Ireland	INAB
Italy	SIT
Japan	IA-JAPAN
Netherlands	RvA
Norway	NA
Poland	PCA
Portugal	IPAC
South Africa	SANAS
Slovenia	SA
Spain	ENAC
Sweden	SWEDAC
Switzerland	SAS
Turkey	TURKAK
United Kingdom	UKAS
USA	NVLAP

Complete list and details under [www.ILAC.org](http://www.ILAC.org)

**A choice of service levels**



**Service programme**

Service levels Procedures	Maintenance and control per ISO 8655						Accredited calibration per ISO 17025				
	Check-up	Standard	Classic	Premium	Advanced	Ultra	Classic SCS	Premium SCS	Ultra SCS	New instruments	
Instrument registration	•	•	•	•	•	•	•	•	•	Accredited certificate to be ordered with instrument	
Gravimetric test before maintenance ("as found")	Min. vol.	5 x			10 x	10 x			10 x		
	Mid. vol.	5 x				10 x <sup>2)</sup>			10 x <sup>2)</sup>		
	Max. vol.	5 x				10 x			10 x		
Decontamination, disinfection, disassembling, cleaning		•	•	•	•	•	•	•	•		
Instrument check-up	•	•	•	•	•	•	•	•	•		
X-ring replacement as needed		•	•	•	•	•	•	•	•		
Other faulty parts replacement as needed		•	•	•	•	•	•	•	•		
Function and tightness check	•	•	•	•	•	•	•	•	•		
Gravimetric test after maintenance per ISO 8655	Min. vol.		4 x <sup>1)</sup>	10 x	10 x	10 x					
	Mid. vol.		-	-	10 x <sup>2)</sup>	-			10 x <sup>2)</sup>		
	Max. vol.		4 x <sup>1)</sup>	10 x	10 x	10 x			10 x		
Gravimetric test after maintenance per ISO 17025	Min. vol.						10 x	10 x	10 x		10 x
	Mid. vol.						-	10 x <sup>2)</sup>	10 x <sup>2)</sup>		10 x <sup>2)</sup>
	Max. vol.						10 x	10 x	10 x	10 x	
Final check and visa	•	•	•	•	•	•	•	•	•		
QC certificate before maintenance ("as found")	•				•	•			• ISO 17025		
QC certificate after calibration ("as left")		•	•	•	•	•	•	•			
Accredited certificate per ISO 17025							•	•	•	•	

<sup>1)</sup> Five measurements below 50 µL

<sup>2)</sup> When applicable



### **Important information**

Refer to package inserts for safety precautions, operating instructions and warranty terms.

User must pay special attention to possible hand fatigue during serial pipetting and its medical consequences such as repetitive strain injuries (RSI).

Mind risks involved in handling hazardous liquids with respect to personal, third party and environmental protection and safety.

Products and specifications are subject to change without prior notice.



**SOCOREX ISBA SA**  
**Champ-Colomb 7, P.O. Box**  
**1024 Ecublens/Lausanne**  
**Switzerland**  
**socorex@socorex.com**  
**www.socorex.com**  
**Tel. +41 (0)21 651 6000**  
**Fax +41 (0)21 651 6001**

### **Your local distributor**
